

HK Children Happiness Index 2014

2014年香港兒童快樂指數

何灝生

Lok Sang HO

Centre for Public Policy Studies
Lingnan University



Commissioned by

Early Childhood Development Research Foundation

香港嬰幼兒發展研究基金會



2015

- We started to contact the schools in September to October, 2014. Questionnaires were sent to and received from the schools in the period of October and November 2014.
 - 2014年9月至11月間完成
- A total of 10 primary schools, and 10 secondary schools participated in the Survey.
 - 10所小學 + 10所中學參與
- A total of 1,182 student questionnaires (primary 528; secondary 654), 1,077 “parent 1” questionnaires (primary 496; secondary 581) and 686 “parent 2” questionnaires (primary 268; secondary 418) were collected.
 - 1182學童參與；1077+686父母回答家長問卷

	Students		Parents 1		Parents 2	
	N	%	N	%	N	%
Primary schools						
School 1	32	2.7	21	1.9	11	1.6
School 2	61	5.2	60	5.6	36	5.2
School 3	40	3.4	34	3.2	25	3.6
School 4	30	2.5	29	2.7	19	2.8
School 5	96	8.1	93	8.6	57	8.3
School 6	49	4.1	49	4.5	21	3.1
School 7	105	8.9	104	9.7	50	7.3
School 8	36	3.0	29	2.7	2	0.3
School 9	27	2.3	27	2.5	15	2.2
School 10	52	4.4	50	4.6	32	4.7
Secondary schools						
School 1	62	5.2	61	5.7	49	7.1
School 2	84	7.1	81	7.5	71	10.3
School 3	65	5.5	59	5.5	38	5.5
School 4	68	5.8	42	3.9	29	4.2
School 5	34	2.9	31	2.9	25	3.6
School 6	79	6.7	77	7.1	70	10.2
School 7	70	5.9	44	4.1	33	4.8
School 8	36	3.0	35	3.2	23	3.4
School 9	93	7.9	89	8.3	60	8.7
School 10	63	5.3	62	5.8	20	2.9
Total	1,182	100.0	1,077	100.0	686	100.0

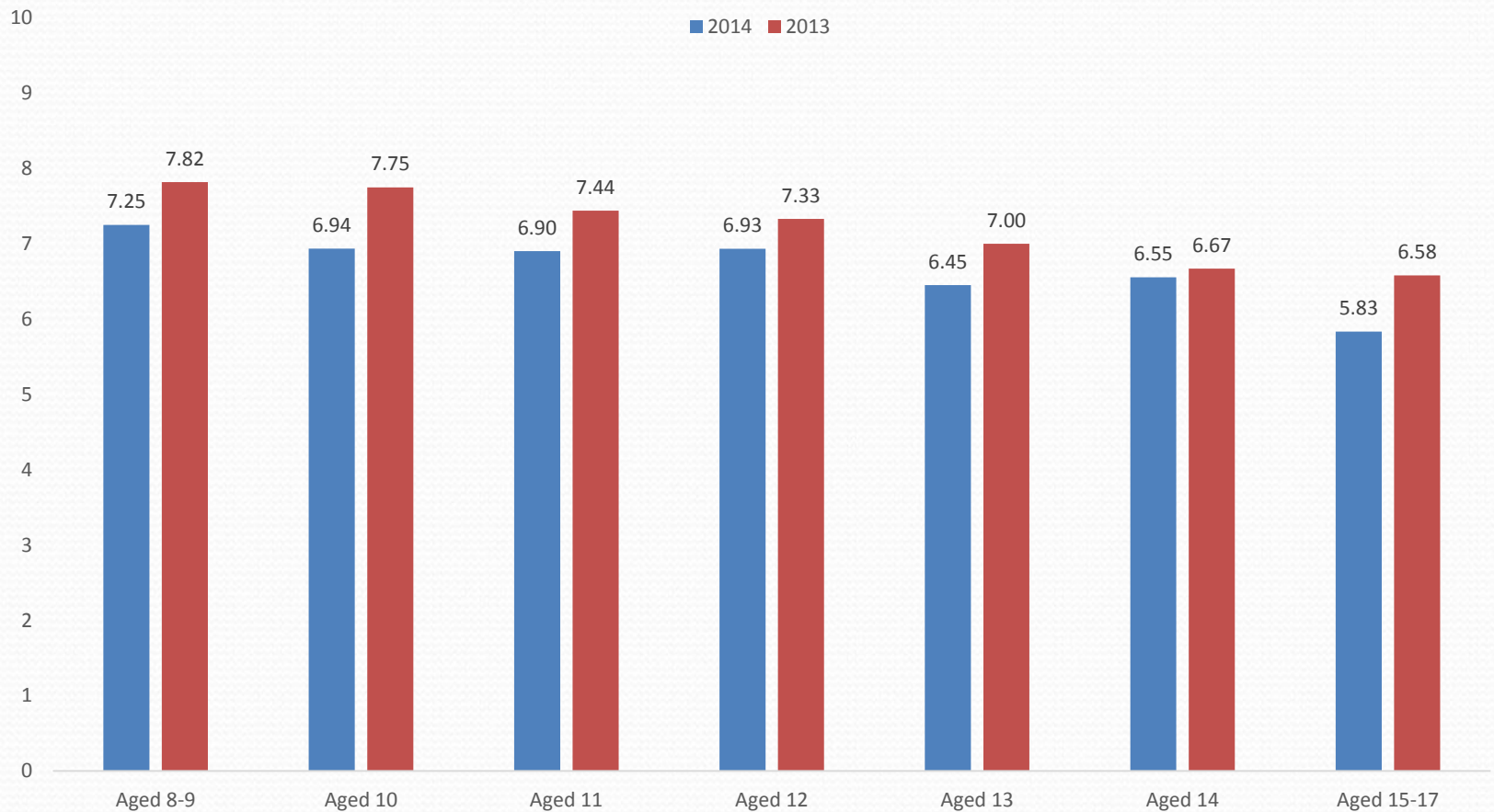
Summary of Findings Table: Happy and Unhappy Children whose Parents are Caring 父母關係、家庭財政情況、壓力與學童快樂關係密切

	Range	Happy children (happiness \geq 6) 快樂兒童			Unhappy children (happiness \leq 4) 不快樂兒童			t-test
		M	SD	N	M	SD	N	
Parents' relationships 雙親關係	1 - 5	4.01	0.97	784	3.38	1.13	154	t(936)=6.49, P=0.000
Children's pressure (academic)學業壓力	1 - 5	2.83	0.76	807	3.43	0.88	167	t(972)=-8.26, P=0.000
Children's pressure (extra curricular)活動壓力	1 - 5	2.17	0.85	804	2.57	1.08	169	t(971)=-4.50, P=0.000
Parents' disciplinary severity on misbehavior 管教嚴厲程度	1 - 5	2.44	0.77	784	2.67	0.83	159	t(941)=-3.29, P=0.000
Children's age 兒童年歲	8 - 17	12.02	1.89	809	12.14	2.04	170	t(977)=-0.67, P=0.253
Parents' age 家長年歲	21 - 75	43.73	6.95	639	42.65	7.36	132	t(769)=1.54, P=0.063
Children's perception of financial wellbeing 財政狀況觀感	1 - 5	4.06	0.81	801	3.43	1.10	164	t(963)=6.97, P=0.000

Survey parameters	Year	Happy children (Happiness \geq 6)	Unhappy children (Happiness \leq 4)	t-test
Parents' Relationships	2012	M = 4.14, N = 560	M = 3.63, N = 76	t(634) = 4.47; p = 0.000
	2013	M = 4.11, N = 786	M = 3.23, N = 91	t(875) = 7.93; p = 0.000
	2014	M = 4.01, N = 784	M = 3.38, N = 154	t(936) = 6.49; p = 0.000
Disciplining Score	2012	M = 2.37, N = 556	M = 2.60, N = 76	t(630) = 2.19; p = 0.03
	2013	M = 2.46, N = 803	M = 2.75, N = 96	t(897) = 3.43; p = 0.000
	2014	M = 2.44, N = 784	M = 2.67, N = 159	t(941) = 3.29; p = 0.000
Children's pressures (academic)	2012	M = 2.92, N = 698	M = 3.60, N = 134	t(830) = 7.15; p = 0.000
	2013	M = 2.68, N = 797	M = 3.44, N = 101	t(896) = 7.78; p = 0.000
	2014	M = 2.83, N = 807	M = 3.43, N = 167	t(972) = 8.26; p = 0.000
Children's pressures (activities)	2012	M = 2.11, N = 695	M = 2.78, N = 132	t(825) = 5.14; p = 0.000
	2013	M = 2.04, N = 813	M = 2.61, N = 103	t(914) = 4.10; p = 0.000
	2014	M = 2.17, N = 807	M = 2.57, N = 169	t(971) = 4.50; p = 0.000
Children's perception on financial wellbeing	2012	M = 4.06, N = 575	M = 3.69, N = 77	t(650) = 3.42; p = 0.000
	2013	M = 4.01, N = 802	M = 3.25, N = 93	t(893) = -7.7; p = 0.000
	2014	M = 4.06, N = 801	M = 3.43, N = 164	t(963) = 6.97; p = 0.000
Family Life Score	2012	M = 1.16, N = 678	M = 0.30, N = 131	t(807) = 97.42; p = 0.000
	2013	M = 1.29, N = 809	M = 0.25, N = 102	t(909) = 9.38; p = 0.000
	2014	M = 1.31, N = 702	M = 0.42, N = 134	t(834) = 9.46; p = 0.000
Happy Family Score	2012	M = 4.04, N = 697	M = 3.07, N = 133	t(828) = 8.05; p = 0.000
	2013	M = 4.17, N = 806	M = 3.10, N = 101	t(905) = 9.07; p = 0.000
	2014	M = 4.12, N = 774	M = 3.36, N = 151	t(923) = 8.20; p = 0.000

Children Happiness Falls across the Board in 2014 兒童快樂指數全面下跌

Comparison of Children's Happiness by Age
in 2014 and 2013



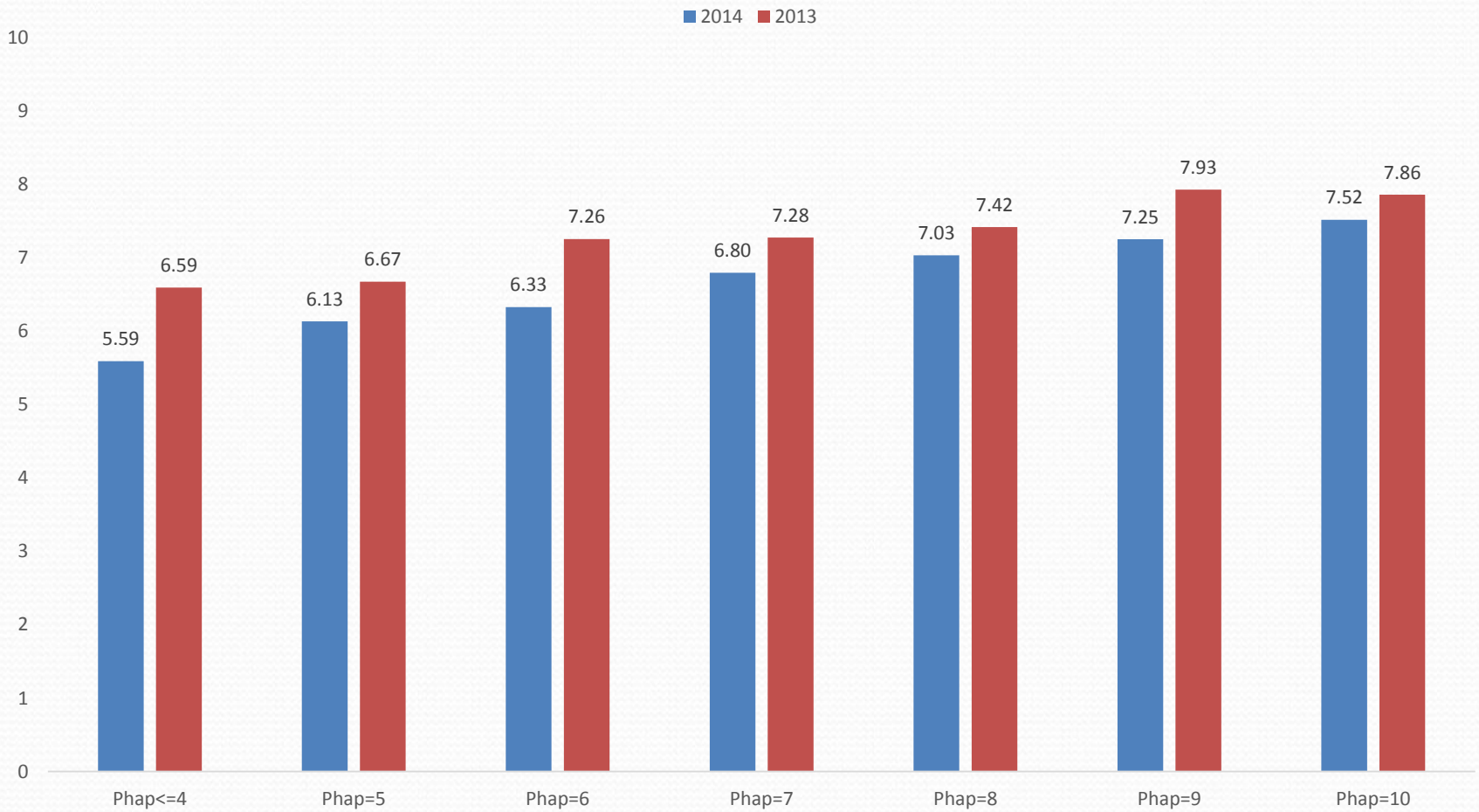
School Children Happiness Indices 2012-2014: Decline across all ages last year: Falling to 6.74 from 7.23

Age	2012	2013	2014
8 to 9	7.94	7.82	7.25
10	6.96	7.75	6.94
11	7.31	7.44	6.9
12	6.93	7.33	6.93
13	6.37	7	6.45
14	6.55	6.67	6.55
15 to 17	6.33	6.58	5.83
Average	6.91	7.23	6.74

Happiness by School Grade 愈高級的學童，十分快樂的比率愈低

	P4	P5	P6	S1	S2	S3
Very unhappy (0-2)	22	3	4	4	9	12
Neutral (3-7)	114	38	72	47	106	204
Very happy (8-10)	131	53	68	39	57	101
Mean	6.97	7.19	6.98	6.76	6.38	6.40
% of very unhappy	8%	3%	3%	4%	5%	4%
% of very happy	49%	56%	47%	43%	33%	32%
Obs	267	94	144	90	172	317

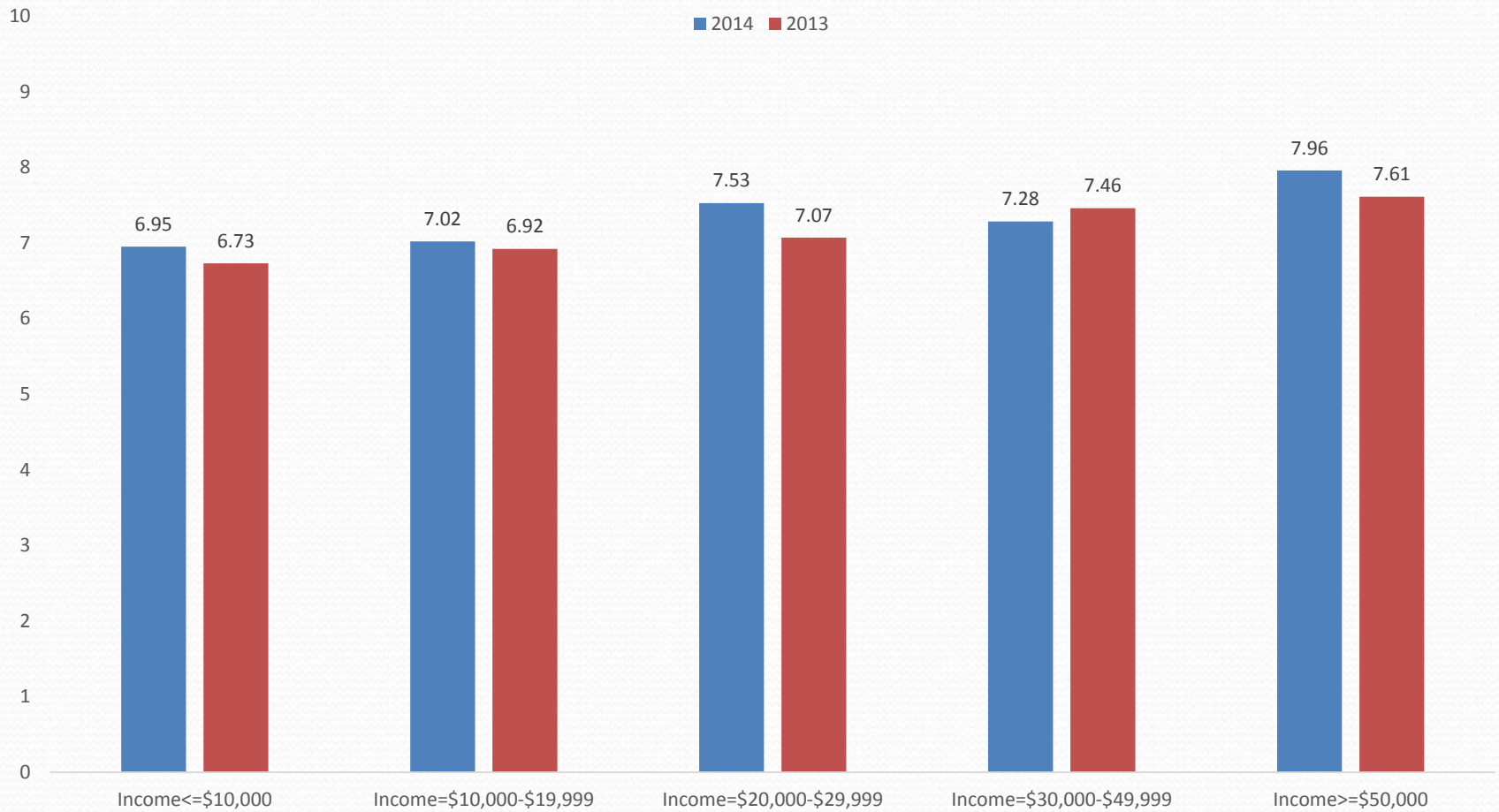
Comparison of Children's Happiness by Parents' Happiness in 2014 & 2013 雙親快樂孩子更快樂



* Phap = Parents' Happiness

Comparison of Average Parents' Happiness by Monthly income in 2013 & 2014

唯獨中等收入父母快樂2014年下降



The Two Pressures Have Been Falling

兩種壓力近年均在下跌

School work pressure Distribution Percentages

	2014	2013	2012
Low(1-2) 低	15.5%	27.7%	20.3%
Middle(3) 中	69.9%	54.1%	55.7%
High (4-5) 高	14.6%	18.2%	24.0%

Extra-curricular activities pressure Distribution Percentages

	2014	2013	2012
Low(1-2) 低	53.2%	60.5%	57.2%
Middle(3) 中	40.3%	27.4%	24.2%
High (4-5) 高	6.5%	12.1%	18.6%

Mental Capital: 心理資本

The Key to Successful Living

- **Love 關愛**
 - 你樂於為爸媽做些事情
 - 你樂於為有需要的人做些事情
- **Insight 智慧**
 - 接受別人批評並不難受
 - 做事不一定要優勝於別人，但一定要盡最大的努力
 - 你懂得把握時間的分配
 - 你不嚮往奢華的生活

● Fortitude堅毅

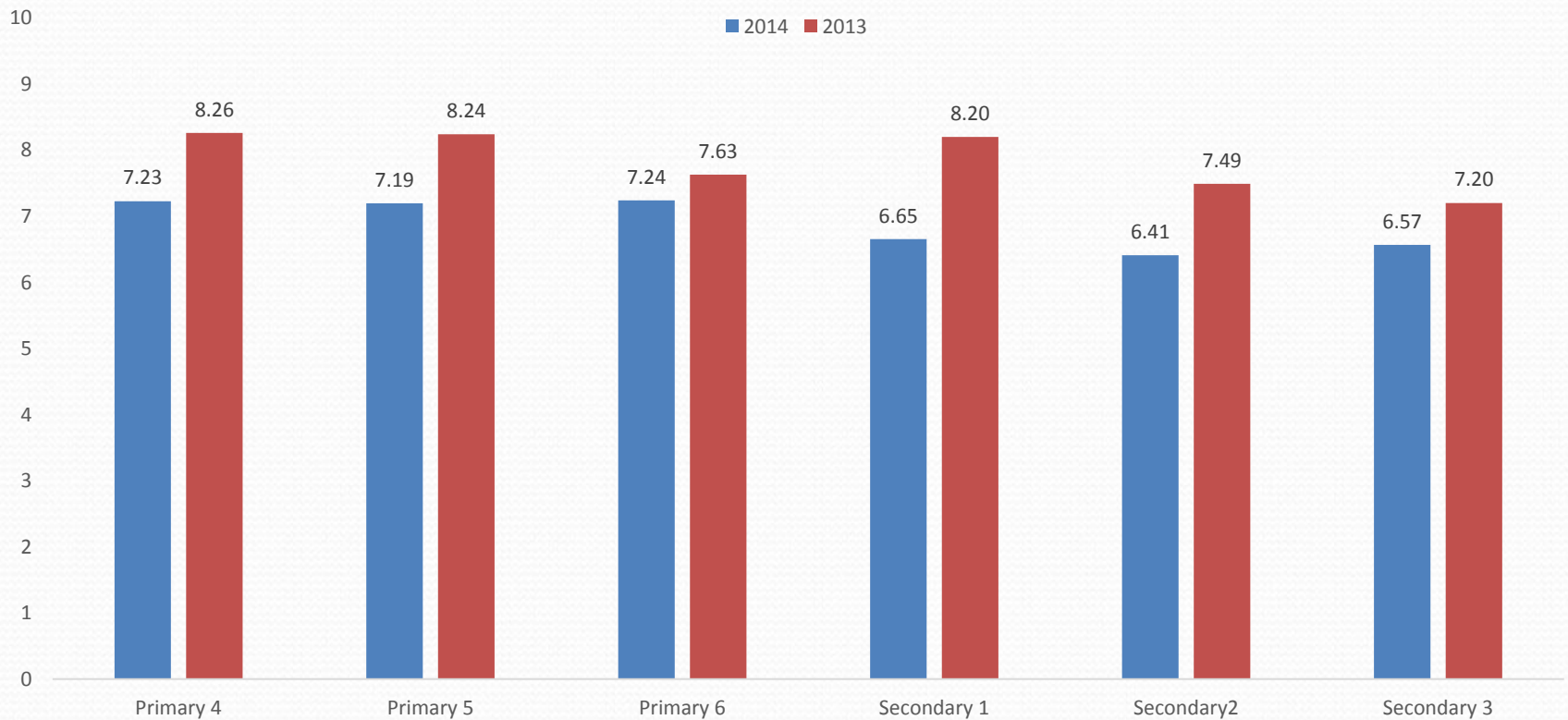
- 你有勇氣面對困難
- 當你決定要做一件事時，你不會輕易放棄
- 你對前景充滿信心

● Engagement行動

- 你經常全心全意努力做好每一件事
- 你積極尋找有興趣的事情來做

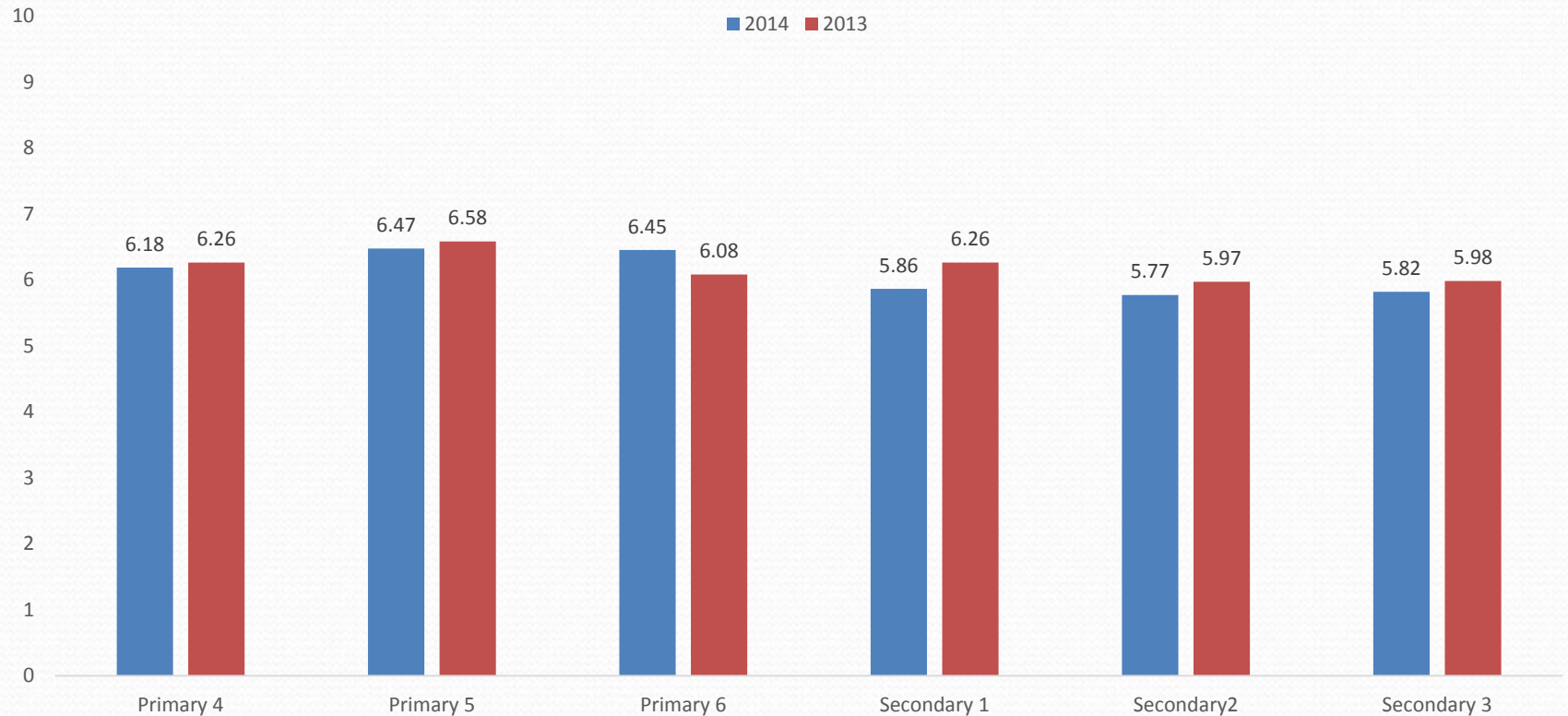
Love score falls across the board

Comparison of Average Love Score by School Grade in 2014 & 2013



Insight Score Falls from Primary 6

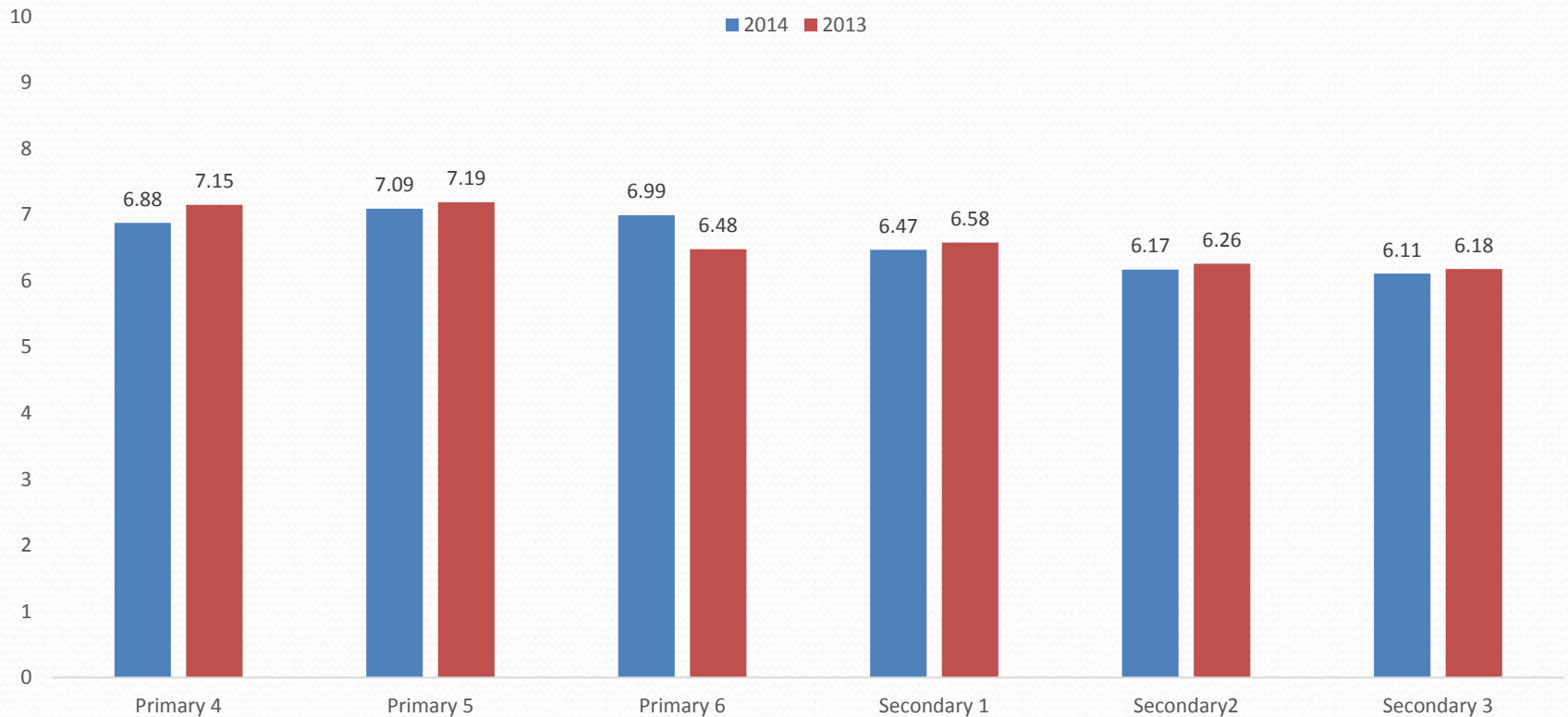
Comparison of Average Insight Score by School Grade in 2014 & 2013



Fortitude falls from Primary 6

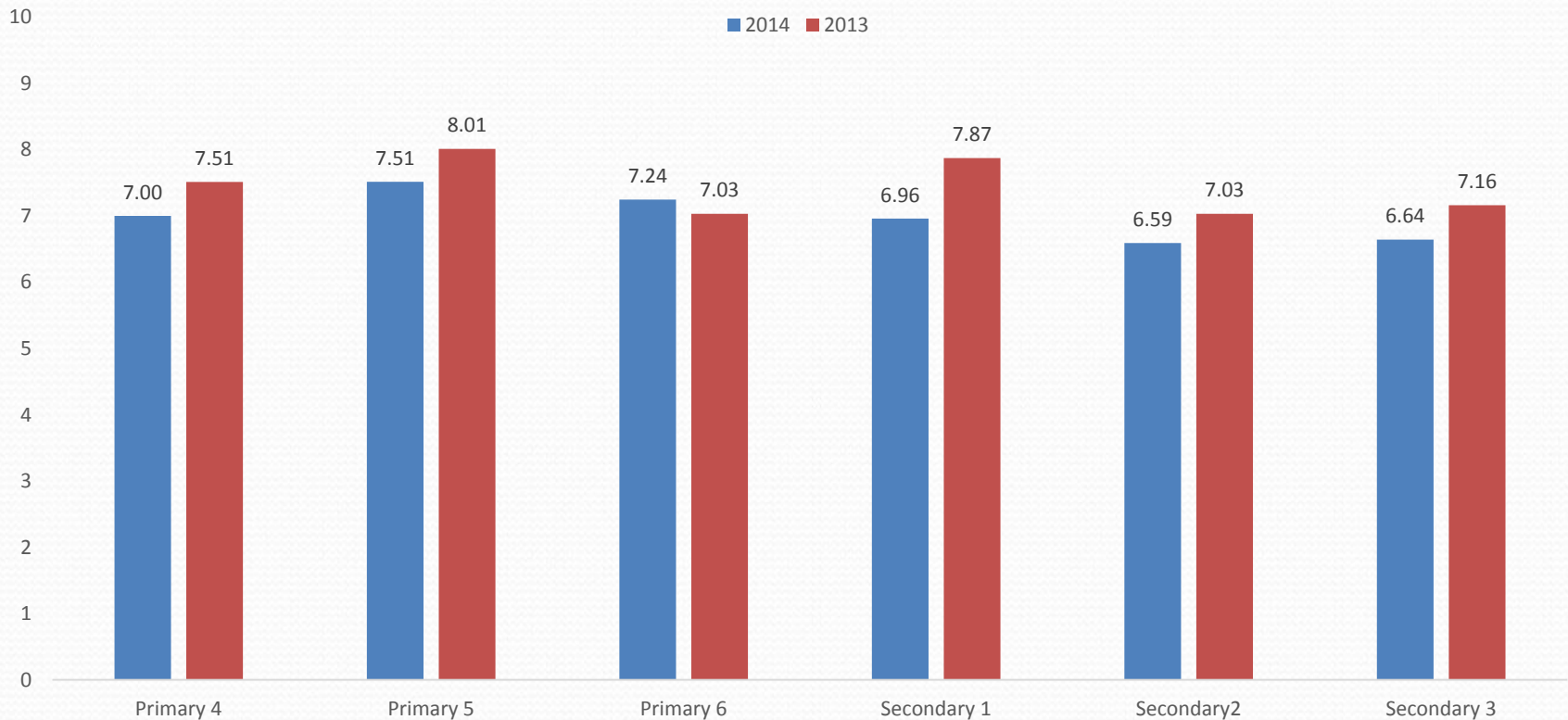
小六起堅毅指數拾級下跌

Comparison of Average Fortitude Score by School Grade
in 2014 & 2013



Engagement Index falls starting from Primary 6; slight pick up in Secondary 3

Comparison of Average Engagement Score by School Grade in 2014 & 2013



關愛和智慧對幸福感最為重要

• . reg hap love insight fortitude engagement

Source	SS	df	MS			
Model	1043.52312	4	260.880781	Number of obs =	1103	
Residual	4644.9048	1098	4.23033224	F(4, 1098) =	61.67	
Total	5688.42792	1102	5.16191282	Prob > F =	0.0000	
				R-squared =	0.1834	
				Adj R-squared =	0.1805	
				Root MSE =	2.0568	

hap	Coef.	Std. Err.	t	P> t	[95% Conf. Interval]	
love	.2287424	.041006	5.58	0.000	.1482834	.3092015
insight	.1917171	.0533963	3.59	0.000	.0869468	.2964874
fortitude	.1662676	.0506016	3.29	0.001	.0669809	.2655544
engagement	.0181195	.0469382	0.39	0.700	-.0739793	.1102183
_cons	2.802058	.2678697	10.46	0.000	2.276463	3.327652

Age carries a negative coefficient

少年期快樂下跌

• . reg hap love insight fortitude engagement age

Source	SS	df	MS	Number of obs = 1088		
Model	1068.99204	5	213.798407	F(5, 1082) = 51.15		
Residual	4522.99326	1082	4.18021558	Prob > F = 0.0000		
Total	5591.98529	1087	5.14442069	R-squared = 0.1912		
				Adj R-squared = 0.1874		
				Root MSE = 2.0446		

hap	Coef.	Std. Err.	t	P> t	[95% Conf. Interval]	
love	.231807	.0410116	5.65	0.000	.1513357	.3122783
insight	.1874925	.0535364	3.50	0.000	.0824455	.2925395
fortitude	.159821	.0511234	3.13	0.002	.0595088	.2601333
engagement	.0180552	.0468665	0.39	0.700	-.0739044	.1100148
age	-.0615323	.0333599	-1.84	0.065	-.1269896	.0039251
_cons	3.592649	.5281417	6.80	0.000	2.556351	4.628947

家庭財政狀況影響不可忽視

• . reg hap love insight fortitude engagement male age page pedu finwelloff

Source	SS	df	MS	Number of obs =	812
Model	968.596665	9	107.621852	F(9, 802) =	28.46
Residual	3032.65949	802	3.78137094	Prob > F =	0.0000
Total	4001.25616	811	4.93373139	R-squared =	0.2421
				Adj R-squared =	0.2336
				Root MSE =	1.9446

hap	Coef.	Std. Err.	t	P> t	[95% Conf. Interval]
love	.2421753	.0478489	5.06	0.000	.1482515 .3360991
insight	.2092008	.061561	3.40	0.001	.0883611 .3300406
fortitude	.0674429	.05854	1.15	0.250	-.0474669 .1823527
engagement	.0109374	.0525551	0.21	0.835	-.0922244 .1140991
male	-.1382513	.1446918	-0.96	0.340	-.4222707 .1457681
age	-.0054199	.0385784	-0.14	0.888	-.0811465 .0703067
page	.0196461	.0100828	1.95	0.052	-.0001456 .0394378
pedu	-.0441487	.1404642	-0.31	0.753	-.3198695 .2315722
finwelloff	.5340354	.0817554	6.53	0.000	.3735556 .6945152
_cons	.5948875	.7931167	0.75	0.453	-.9619422 2.151717

Correlation between Children's and Parents' LIFE Scores

	<i>Hap</i>	<i>Love</i>	<i>Insight</i>	<i>Fortitude</i>	<i>Engagement</i>	<i>Phap</i>	<i>Plove</i>	<i>Pinsight</i>	<i>Pfortitude</i>	<i>Pengagement</i>
Hap	1									
Love	0.40	1								
Insight	0.41	0.60	1							
Fortitude	0.39	0.58	0.65	1						
Engagement	0.35	0.57	0.56	0.71	1					
Phap	0.20	0.13	0.13	0.15	0.09	1				
Plove	0.13	0.16	0.10	0.13	0.11	0.25	1			
Pinsight	0.12	0.14	0.10	0.10	0.11	0.32	0.57	1		
Pfortitude	0.10	0.13	0.11	0.14	0.11	0.29	0.53	0.69	1	
Pengagement	0.11	0.11	0.07	0.10	0.09	0.27	0.46	0.61	0.69	1

Parents' Life Scores Positive for children's happiness

• . reg hap plove pinsight pfortitude pengagement

Source	SS	df	MS			
Model	114.103011	4	28.5257529	Number of obs =	1030	
Residual	5299.9834	1025	5.17071551	F(4, 1025) =	5.52	
Total	5414.08641	1029	5.26150283	Prob > F =	0.0002	
				R-squared =	0.0211	
				Adj R-squared =	0.0173	
				Root MSE =	2.2739	

hap	Coef.	Std. Err.	t	P> t	[95% Conf. Interval]	
plove	.0987357	.0637645	1.55	0.122	-.0263881	.2238596
pinsight	.1460054	.0946652	1.54	0.123	-.0397544	.3317651
pfortitude	-.0410724	.0778608	-0.53	0.598	-.1938572	.1117124
pengagement	.1021091	.0719958	1.42	0.156	-.0391668	.243385
_cons	4.656483	.4653661	10.01	0.000	3.743304	5.569662

LIFE Definitions for Parents

7a. 你很樂意為家庭作出犧牲 Love

7b. 你從心底關心別人、甚至不認識的人

7c. 接受別人批評並不難受 Insight

7d. 做事不一定要優勝於別人，但一定要盡最大的努力

7e. 你懂得把握時間的分配

7f. 你經常會反思，從錯誤中學習

7g. 你有勇氣面對困難 Fortitude

7h. 當你決定要做一件事時，你不會輕易放棄

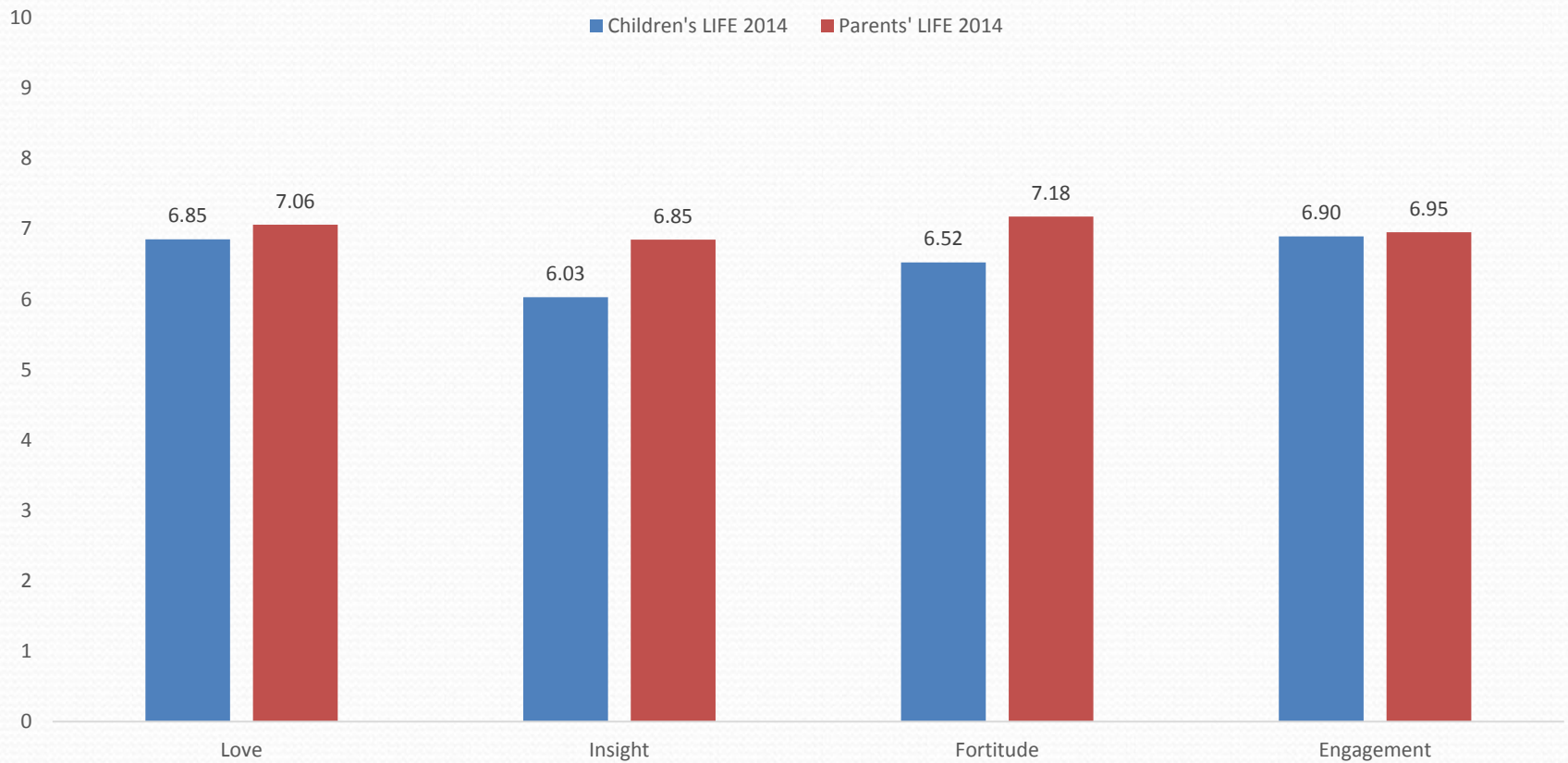
7i. 你經常全心全意努力做好每一件事 Engagement

7j. 你積極尋找有興趣的事情做

7k. 你對前景充滿信心

7l. 你並不嚮往奢華的生活

LIFE Scores for Children and Parents



Parents' Happiness on Parents' LIFE Scores (OLS)

愛智毅行明顯決定父母快樂感

• . reg phap plove pinsight pfortitude pengagement male pmale

Source	SS	df	MS	Number of obs = 1548		
Model	548.878814	6	91.4798023	F(6, 1541) =	40.47	
Residual	3483.23165	1541	2.26037096	Prob > F =	0.0000	
Total	4032.11047	1547	2.60640625	R-squared =	0.1361	
				Adj R-squared =	0.1328	
				Root MSE =	1.5035	

phap	Coef.	Std. Err.	t	P> t	[95% Conf. Interval]	
plove	.1428385	.0338769	4.22	0.000	.0763888	.2092883
pinsight	.2083146	.0505864	4.12	0.000	.1090892	.30754
pfortitude	.0725601	.0395955	1.83	0.067	-.0051068	.1502269
pengagement	.1264221	.0381973	3.31	0.001	.0514979	.2013462
male	.02393	.0784891	0.30	0.760	-.1300267	.1778868
pmale	-.0199122	.0775643	-0.26	0.797	-.1720549	.1322304
_cons	3.373093	.2575288	13.10	0.000	2.867949	3.878237

Parents' Happiness on Parents' LIFE Scores and Other Factors (OLS)

. reg phap plove pinsight pfortitude pengagement page pedu male pmale

Source	SS	df	MS	Number of obs = 1337		
Model	484.262343	8	60.5327929	F(8, 1328) =	26.91	
Residual	2987.7945	1328	2.24984526	Prob > F =	0.0000	
Total	3472.05684	1336	2.59884494	R-squared =	0.1395	
				Adj R-squared =	0.1343	
				Root MSE =	1.4999	

phap	Coef.	Std. Err.	t	P> t	[95% Conf. Interval]	
plove	.1428338	.036775	3.88	0.000	.0706903	.2149773
pinsight	.215445	.0545572	3.95	0.000	.1084172	.3224727
pfortitude	.0637661	.0422574	1.51	0.132	-.0191323	.1466645
pengagement	.1080021	.040755	2.65	0.008	.0280508	.1879534
page	-.0033079	.0071574	-0.46	0.644	-.017349	.0107331
pedu	.2293148	.0811965	2.82	0.005	.0700274	.3886021
male	-.0348429	.0851464	-0.41	0.682	-.201879	.1321932
pmale	-.0520627	.0922821	-0.56	0.573	-.2330973	.1289718
_cons	3.247209	.4384163	7.41	0.000	2.387145	4.107273

```
. reg phap plove pinsight pfortitude pengagement page pedu networking pinc20kup
> male pmale
```

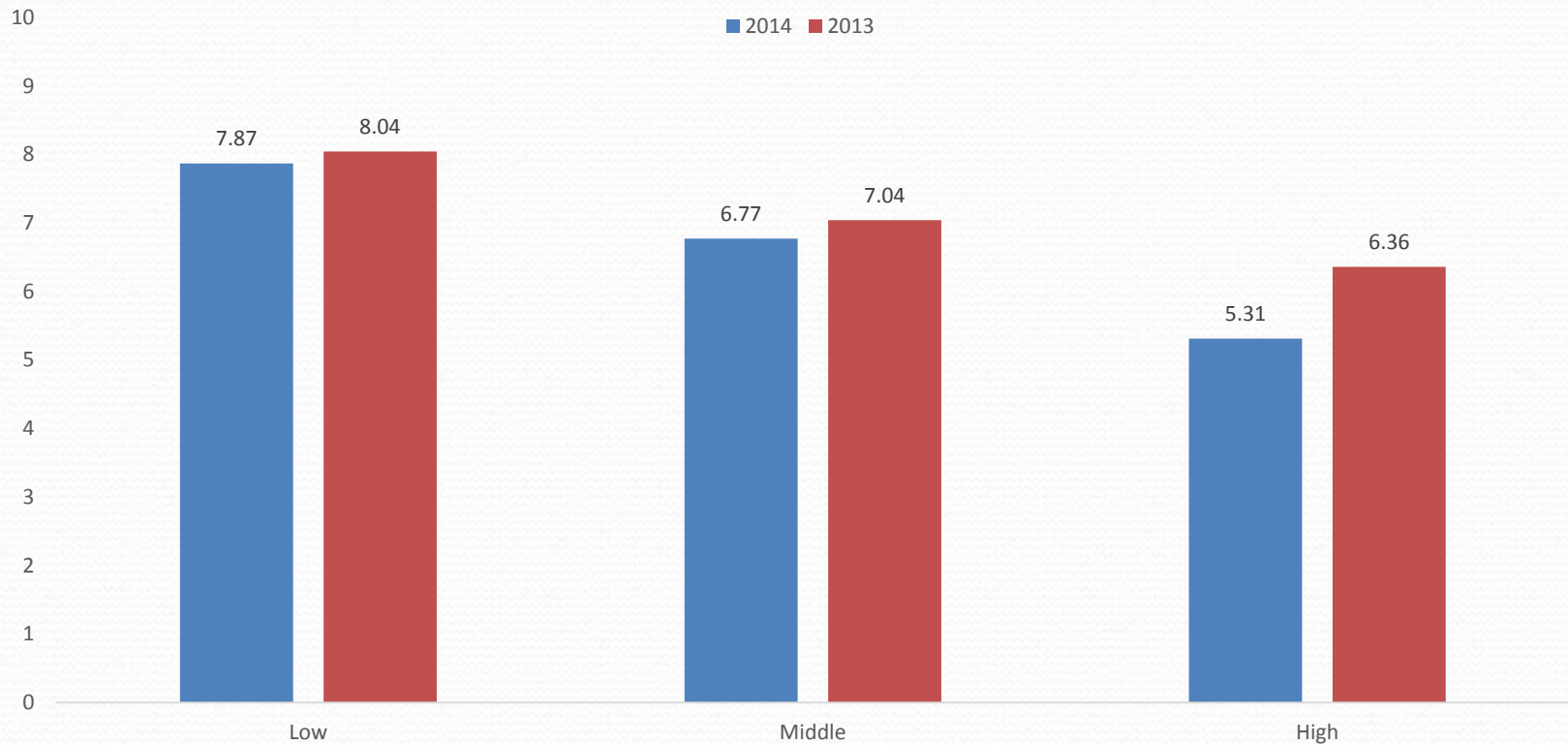
Source	SS	df	MS	Number of obs =	536
Model	209.739579	10	20.9739579	F(10, 525) =	9.35
Residual	1177.69326	525	2.24322525	Prob > F =	0.0000
Total	1387.43284	535	2.5933324	R-squared =	0.1512
				Adj R-squared =	0.1350
				Root MSE =	1.4977

	phap	Coef.	Std. Err.	t	P> t	[95% Conf. Interval]
	plove	.105748	.06125	1.73	0.085	-.0145772 .2260732
	pinsight	.2284551	.0862693	2.65	0.008	.0589796 .3979305
	pfortitude	.0816885	.0744849	1.10	0.273	-.0646366 .2280136
	pengagement	.0769709	.0667679	1.15	0.250	-.0541942 .208136
	page	-.0009606	.0111487	-0.09	0.931	-.0228622 .020941
	pedu	.3713135	.1512246	2.46	0.014	.0742337 .6683932
	networking	-.7920784	.3595395	-2.20	0.028	-1.498391 -.0857656
	pinc20kup	.2125782	.1539647	1.38	0.168	-.0898843 .5150407
	male	-.0013289	.1353016	-0.01	0.992	-.2671279 .2644701
	pmale	-.0286465	.1450676	-0.20	0.844	-.3136306 .2563377
	_cons	2.981568	.7131365	4.18	0.000	1.580617 4.38252

Happiness Score falls with Schoolwork Pressures in Both 2014 & 2013

學業壓力愈大愈不快樂

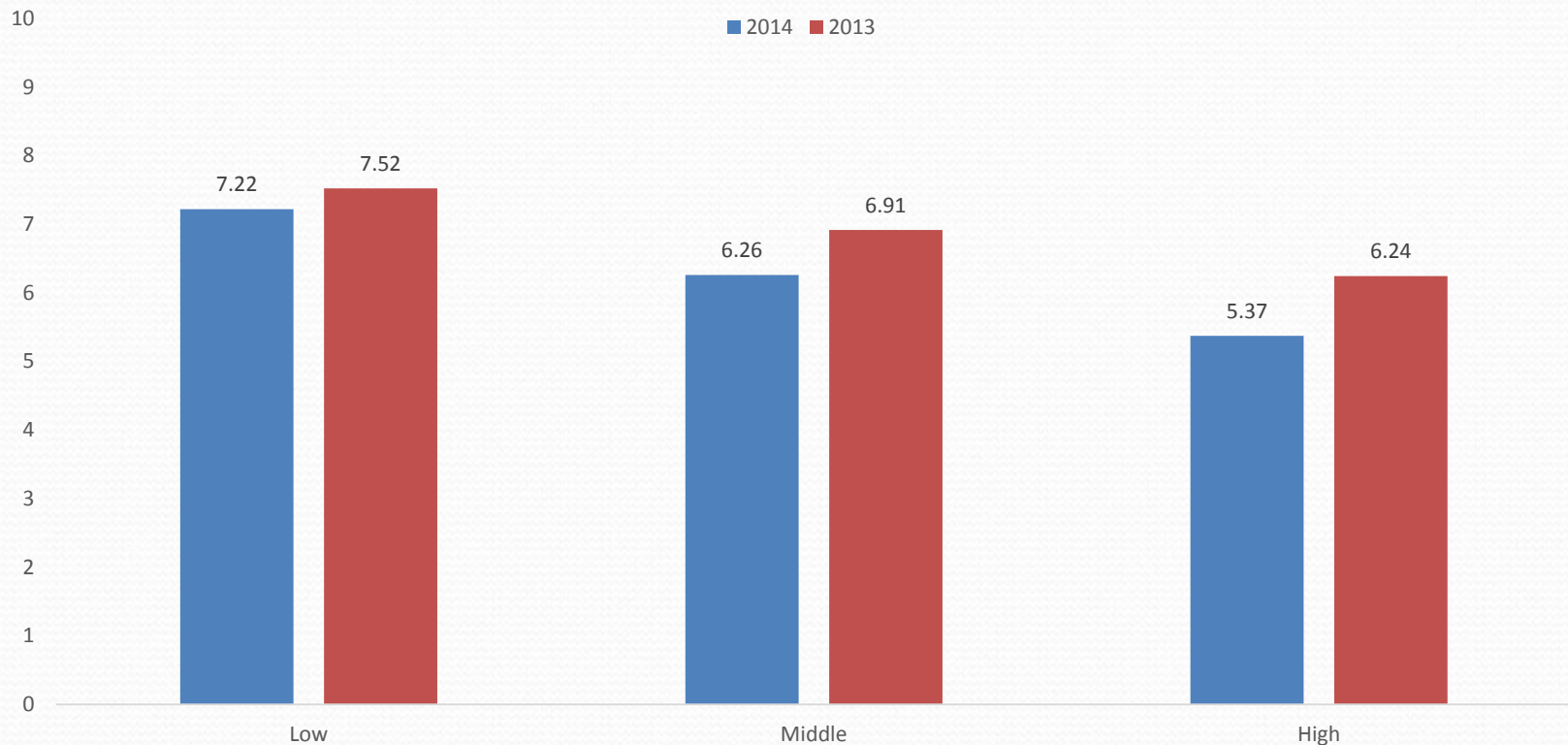
Comparison of Happiness Score falls with school work pressures in 2014 & 2013



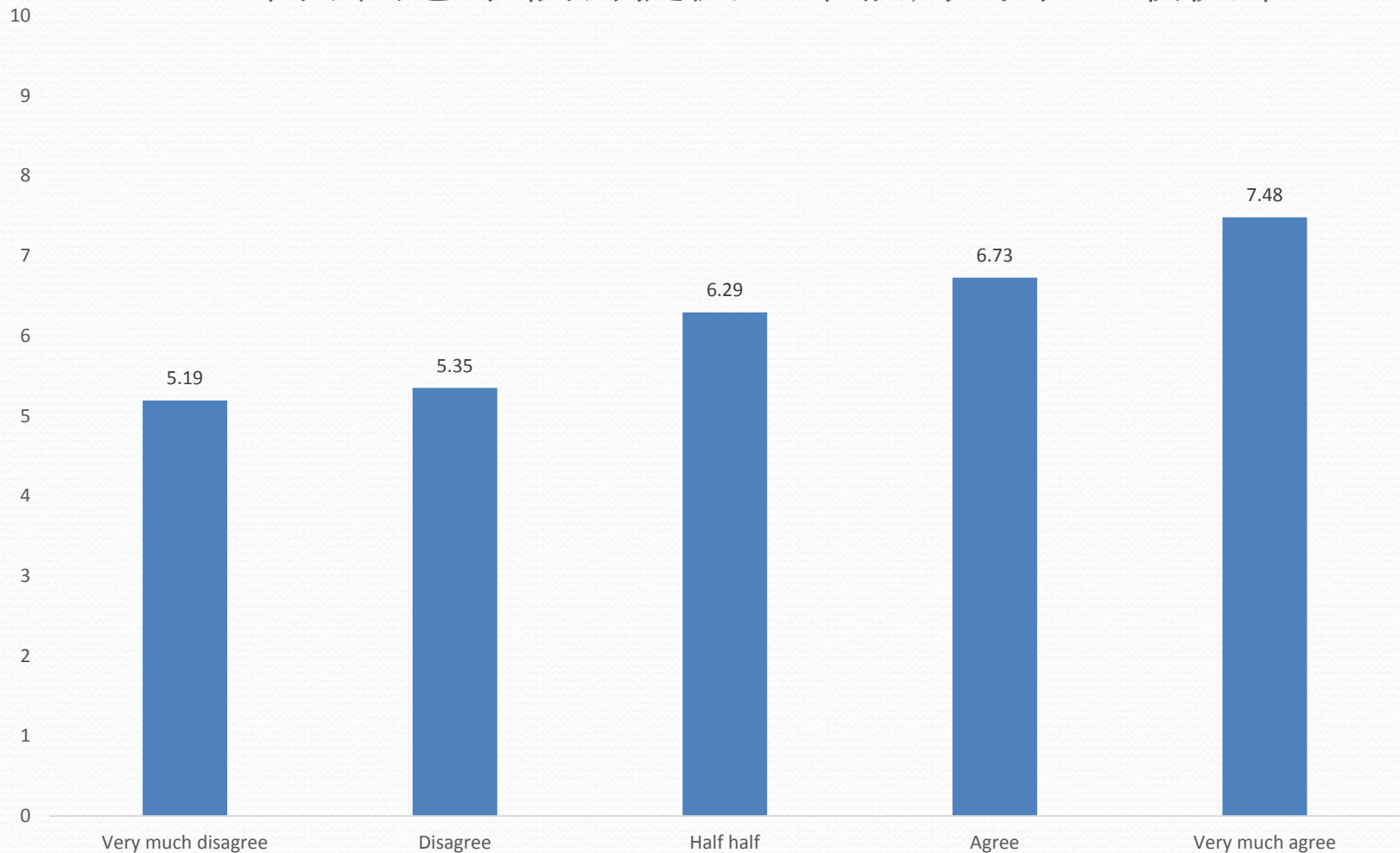
Happiness Score falls with extra-curricular activities pressures in both 2014 & 2013

課外活動壓力愈大愈不快樂

Comparison of Happiness Score falls with extra-curricular activities pressures in 2014 & 2013



Comparison of Children's Happiness for Those who Agree versus Those Who Disagree Their School Offers Life Education 十分同意學校有提供生命教育的學童最快樂



被認為校內有提供生命教育的 學校數字

Schools that offer Life Education

Students' Response:	Primary School	Secondary School	Total
50% or more very much agree	2	0	2
40% or more very much agree	4	1	5
20% or more very much agree	10	3	13

生命教育為學童帶來快樂

Life Education	Frequency	Happiness
Very much agree	312	7.48
Agree	493	6.73
Half half	287	6.29
Disagree	47	5.35
Very much disagree	26	5.19

Family Life “Famlife” definition

和睦家庭定義

- Famlife is a variable on a scale of **-3 to +3**, and measures the quality of family life. It is the average of positive qualities minus the average of negative qualities. Since the maximum of the mean of positive scores is 4, and the minimum of the mean of negative scores is 1, the maximum for Famlife is +3. Conversely the minimum of Famlife is -3.
- Average (11b+11d) minus Average(11e+11f+11g+11j+11i+11j)

The “high quality episodes” are covered by questions 11b and 11d, viz:

11b. You do many things together with your family, e.g. outing, dining and watching movies (Family Plus Score)

11d. Your parents praise or encourage you (Family Plus Score)

The “low quality episodes” are covered by 11e, 11f, 11g, 11h, 11i and 11j:

11e. Your parents have arguments with each other (Family Minus Score)

11f. Your parents have physical fights with each other(Family Minus Score)

11g. Your mom scolds you without a good reason (Family minus Score)

11h. Your dad scolds you without a good reason (Family minus score)

11i. Your mom beats you up without a good reason (Family minus score)

11j. Your dad beats you up without a good reason (Family minus score)

Positive Famlife 從不 很少 有時 經常 +1,+2,+3,+4

- 一家人一起旅行、郊遊、飲茶、看電影或其他活動
- 父母讚賞你

Negative Famlife 從不 很少 有時 經常 -1,-2,-3,-4

- 父母之間爭執
- 父母之間打架
- 媽媽無理責罵你
- 爸爸無理責罵你
- 媽媽無理打你
- 爸爸無理打你

Happy Family “Hapfam” definition

Hapfam

Your mom has a good relationship with your dad

You have a warm, loving family

Hapfam is the average of this two questions and the questions are 1-5 scale.

父母之間的關係非常融洽
你有一個美滿家庭

家庭幸福感與和睦家庭生活

Overview of Family Life: Subjective Quality and Objective Behaviour

		Range	%	Freq.
Hapfam 家庭幸福感	Happy	4 - 5	66.61%	734
	Neutral	>2 - <4	28.04%	309
	Unhappy	1 - 2	5.35%	59
Famlife 和睦家庭生活	Good	1 - 3	59.63%	607
	Neutral	>-1 - <1	38.51%	392
	Bad	-3 - -1	1.87%	19

Hapfam and Famlife by Age of Child

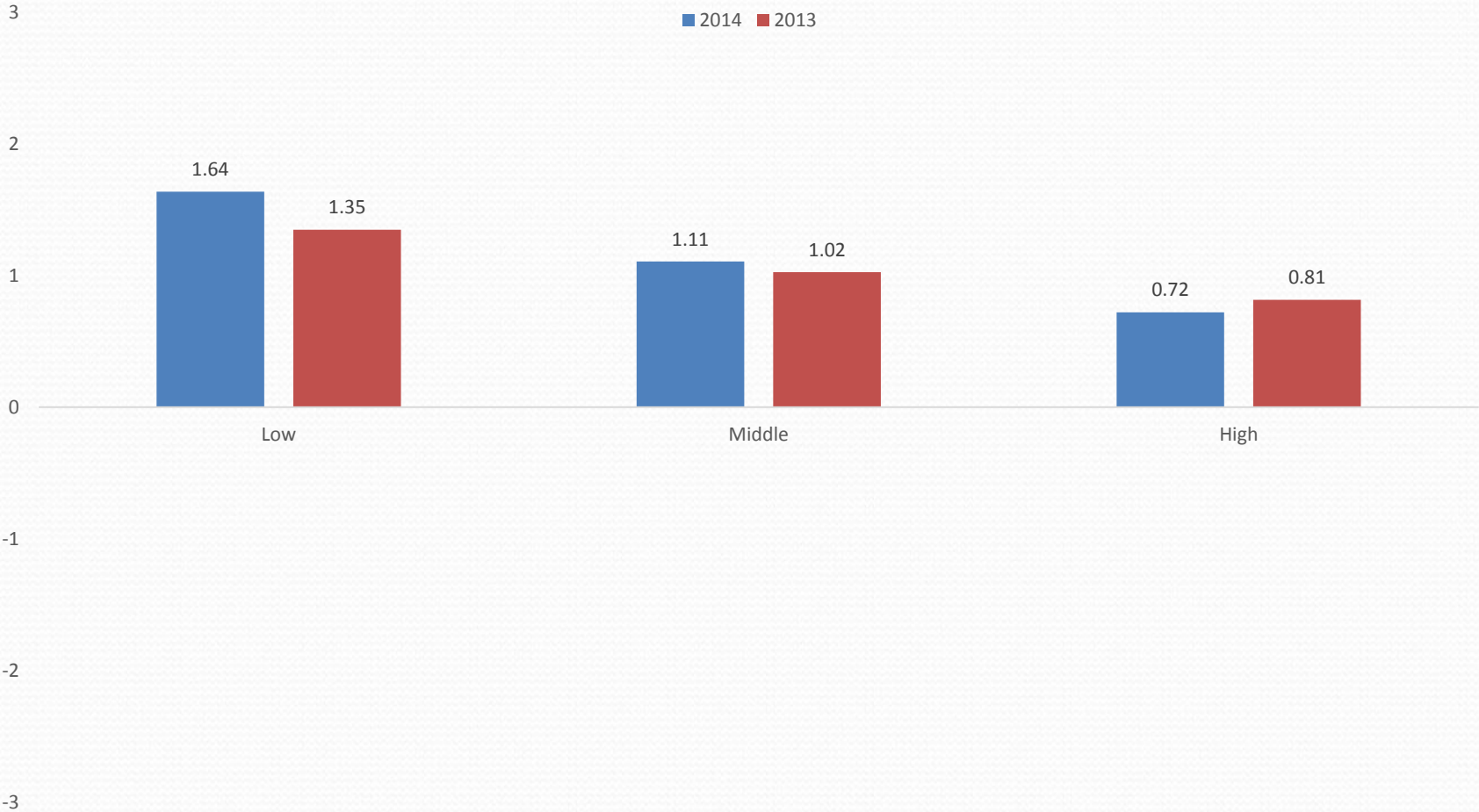
	Age	8	9	10	11	12	13	14	15	16	17
Hapfam 家庭幸福感	Happy	43%	66%	68%	69%	70%	62%	69%	57%	60%	67%
	Neutral	57%	27%	26%	29%	27%	30%	27%	32%	40%	33%
	Unhappy	0%	6%	5%	2%	3%	8%	5%	11%	0%	0%
Famlife 和睦家庭生活	Bad	0%	0%	4%	2%	2%	1%	2%	3%	0%	0%
	Neutral	60%	38%	26%	32%	33%	45%	41%	62%	57%	50%
	Good	40%	62%	70%	66%	65%	54%	57%	35%	43%	50%

Frequency Distribution of Famlife Score 和睦家庭指數

Famlife Score	Frequency	Percentage
-3- <-2	1	0.10%
-2- <-1	16	1.57%
-1 -<0	79	7.76%
0 - <1	315	30.94%
1 - <2	377	37.03%
2 - 3	230	22.59%
Total	1018	100.00%

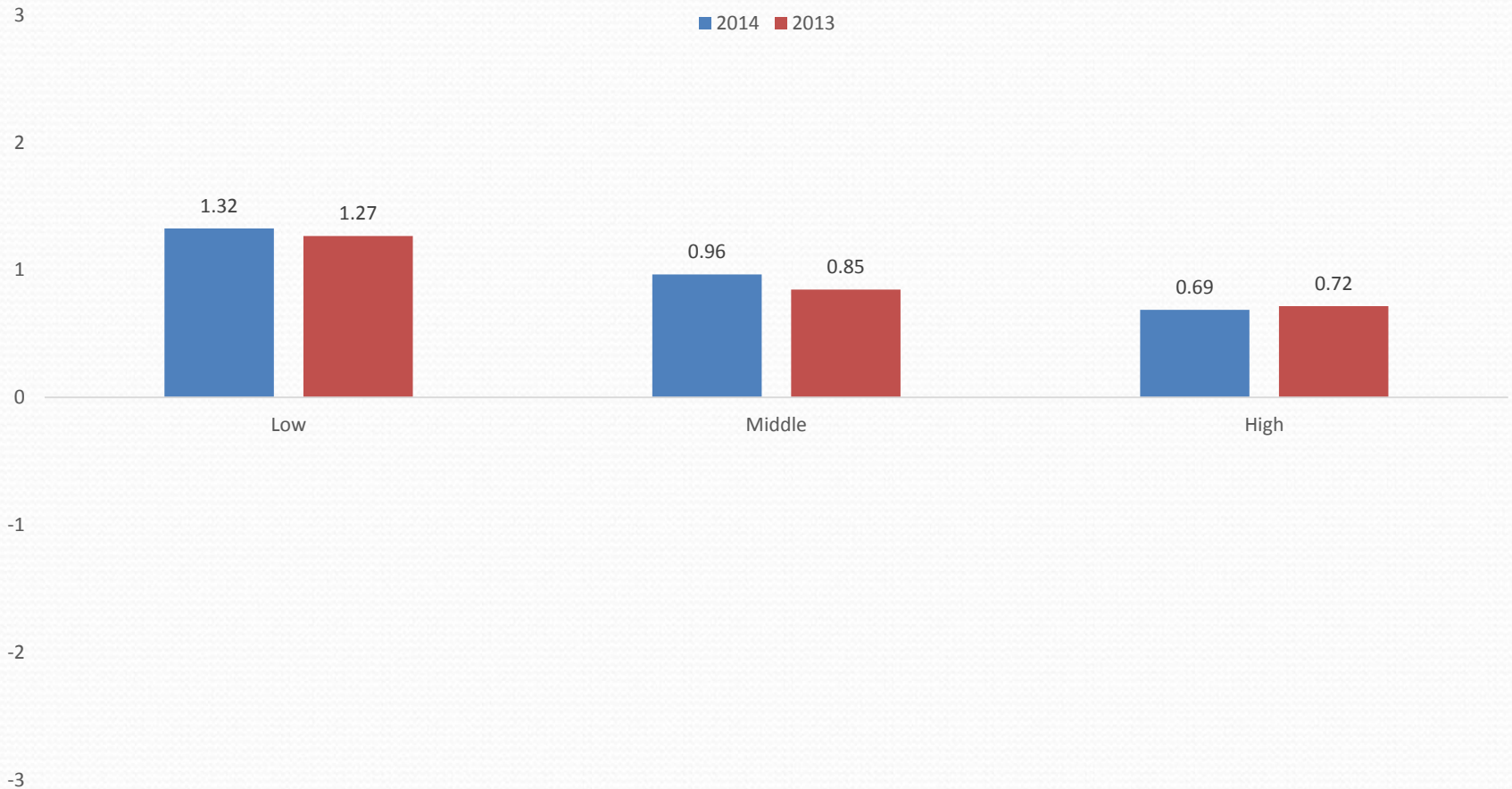
Comparison of Average Famlife Score falls with school work pressures in 2014 & 2013

學業壓力影響和睦家庭指數



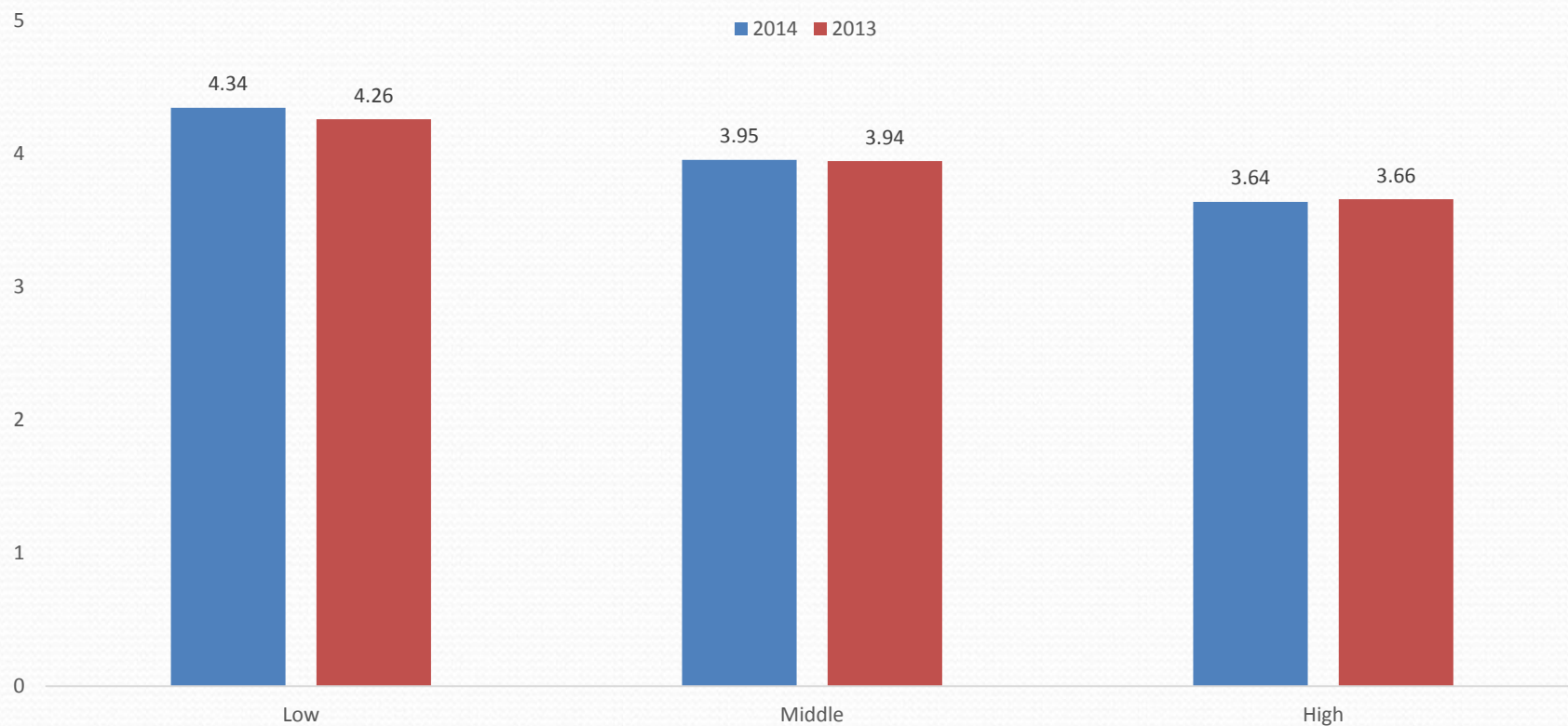
Comparison of Famlife Score falls with extra-curricular activities pressures in 2014 & 2013

課外活動影響和睦家庭指數



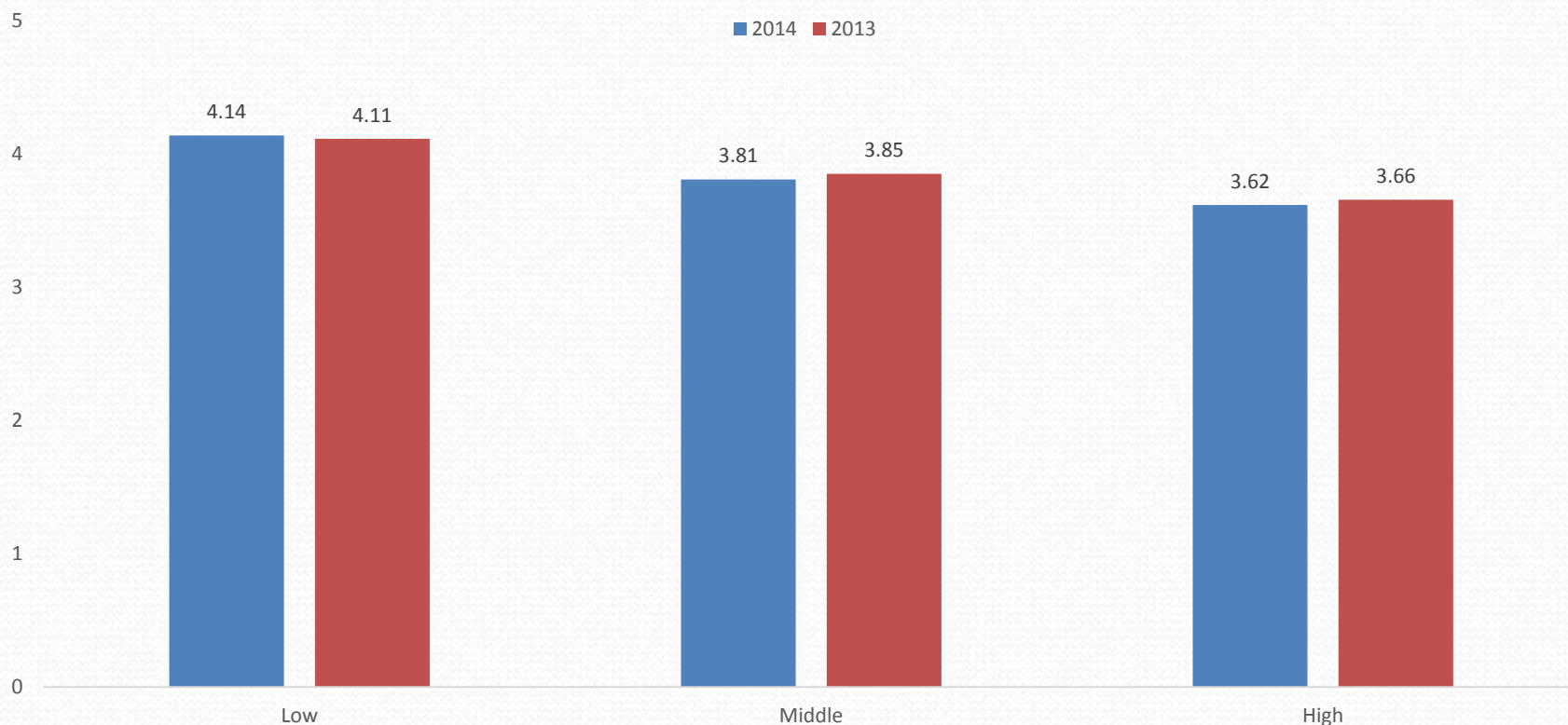
學業壓力損害家庭快樂

Comparison of Average Hapfam Score falls with school work pressures in 2014 & 2013



課外活動壓力亦不容低估

Comparison of Average Hapfam Score falls with extra-curricular activities pressures in 2014 & 2013



Famlife as Explained by School Work and Extra-Curricular Activities Pressure: 課外活動壓力亦不容低估

```
. reg famlife pindexschwkw pindexextact age page pedu sibdum finwelloff male
```

Source	SS	df	MS	Number of obs =	735
Model	125.930051	8	15.7412563	F(8, 726) =	20.66
Residual	553.02535	726	.761742907	Prob > F =	0.0000
Total	678.955401	734	.925007358	R-squared =	0.1855
				Adj R-squared =	0.1765
				Root MSE =	.87278

famlife	Coef.	Std. Err.	t	P> t	[95% Conf. Interval]
pindexschwkw	-.1975899	.0453282	-4.36	0.000	-.2865799 -.1085998
pindexextact	-.0844083	.0415019	-2.03	0.042	-.1658864 -.0029302
age	-.0366437	.0187671	-1.95	0.051	-.0734879 .0002006
page	.0014824	.0047839	0.31	0.757	-.0079096 .0108744
pedu	.1592287	.0665651	2.39	0.017	.0285456 .2899118
sibdum	-.069033	.0717761	-0.96	0.336	-.2099466 .0718806
finwelloff	.3030845	.0416221	7.28	0.000	.2213705 .3847985
male	-.0778393	.0676534	-1.15	0.250	-.2106591 .0549804
_cons	.8990385	.3886217	2.31	0.021	.136082 1.661995

Famlife as Explained by School Work and Extra-Curricular Activities Pressures Using Parent Perception of Financial Well-Being(壓力損害家庭和睦)

```
. reg famlife pindexschwkw pindexextact age page pedu sibdum pfinwelloff male
```

Source	SS	df	MS	Number of obs =	745
Model	93.5272719	8	11.690909	F(8, 736) =	14.84
Residual	579.908593	736	.787919284	Prob > F =	0.0000
Total	673.435865	744	.905155732	R-squared =	0.1389
				Adj R-squared =	0.1295
				Root MSE =	.88765

famlife	Coef.	Std. Err.	t	P> t	[95% Conf. Interval]
pindexschwkw	-.2505814	.0447605	-5.60	0.000	-.3384549 -.1627079
pindexextact	-.1292075	.0412019	-3.14	0.002	-.2100948 -.0483202
age	-.0391682	.0188606	-2.08	0.038	-.0761951 -.0021413
page	-.0011604	.0048265	-0.24	0.810	-.0106357 .0083149
pedu	.198955	.0683876	2.91	0.004	.064697 .333213
sibdum	-.1061951	.0727818	-1.46	0.145	-.2490797 .0366896
pfinwelloff	.1304952	.0426453	3.06	0.002	.0467743 .2142161
male	-.1189943	.0682322	-1.74	0.082	-.2529473 .0149587
_cons	1.984867	.3557957	5.58	0.000	1.286372 2.683363

Hapfam as Explained by School Work and Extra-Curricular Activities Pressures

壓力損害家庭幸福感

```
. reg hapfam pindexschwkw pindexextact age page pedu sibdum finwelloff
```

Source	SS	df	MS	Number of obs = 795		
Model	160.131978	7	22.8759968	F(7, 787)	=	35.70
Residual	504.322739	787	.640816695	Prob > F	=	0.0000
-----				R-squared	=	0.2410
Total	664.454717	794	.836844732	Adj R-squared	=	0.2342
-----				Root MSE	=	.80051
hapfam	Coef.	Std. Err.	t	P> t	[95% Conf. Interval]	
pindexschwkw	-.1261637	.0388083	-3.25	0.001	-.2023436	-.0499837
pindexextact	-.0434167	.0362197	-1.20	0.231	-.1145153	.0276819
age	.010384	.0161619	0.64	0.521	-.0213415	.0421095
page	-.000994	.0041303	-0.24	0.810	-.0091017	.0071138
pedu	.0489345	.058329	0.84	0.402	-.0655642	.1634333
sibdum	.077889	.0629963	1.24	0.217	-.0457717	.2015497
finwelloff	.4599803	.0350561	13.12	0.000	.3911659	.5287948
_cons	2.414257	.3308427	7.30	0.000	1.764819	3.063696

Explaining Effective Communication (OLS)

尊重孩子意見為有效溝通開路

. reg effcom respop respri age agegap

Source	SS	df	MS			
Model	251.686361	4	62.9215902	Number of obs =	806	
Residual	287.697665	801	.359173114	F(4, 801) =	175.18	
Total	539.384025	805	.670042267	Prob > F =	0.0000	
				R-squared =	0.4666	
				Adj R-squared =	0.4640	
				Root MSE =	.59931	

effcom	Coef.	Std. Err.	t	P> t	[95% Conf. Interval]	
respop	.4015827	.0333197	12.05	0.000	.3361784	.4669869
respri	.2348863	.0321803	7.30	0.000	.1717185	.298054
age	-.0179038	.0113875	-1.57	0.116	-.0402567	.0044492
agegap	.0013134	.0030457	0.43	0.666	-.004665	.0072919
_cons	1.618749	.2037773	7.94	0.000	1.218749	2.01875

Explaining Love: Importance of Respect for Privacy & Respect for Child's Opinion, just after parental care (OLS)

對孩子的尊重、雙親關係、財政寬裕有助關愛

```
. reg love parcare respop respri momdadrel finwelloff
```

Source	SS	df	MS	Number of obs =	982
Model	999.022036	5	199.804407	F(5, 976) =	63.96
Residual	3048.85856	976	3.1238305	Prob > F =	0.0000
Total	4047.8806	981	4.12627992	R-squared =	0.2468
				Adj R-squared =	0.2429
				Root MSE =	1.7674

love	Coef.	Std. Err.	t	P> t	[95% Conf. Interval]
parcare	.4738469	.0793735	5.97	0.000	.3180845 .6296094
respop	.2476755	.0920575	2.69	0.007	.0670222 .4283289
respri	.3662522	.0864651	4.24	0.000	.1965733 .5359311
momdadrel	.2323176	.0698893	3.32	0.001	.0951671 .3694681
finwelloff	.2576815	.0729579	3.53	0.000	.114509 .4008539
_cons	.8047413	.3622214	2.22	0.027	.0939189 1.515564

責罰乃導致家庭不和諧的主因

```

• . reg famdishar disciper pindexschw pindexextact finwelloff sibdum age agegap p
• > edu

```

Source	SS	df	MS	Number of obs =	745
Model	76.3110164	8	9.53887705	F(8, 736) =	32.90
Residual	213.38362	736	.289923397	Prob > F =	0.0000
Total	289.694636	744	.389374511	R-squared =	0.2634
				Adj R-squared =	0.2554
				Root MSE =	.53845

	Coef.	Std. Err.	t	P> t	[95% Conf. Interval]	
famdishar						
disciper	.3471589	.0263824	13.16	0.000	.2953652	.3989527
pindexschw	.0291432	.0280556	1.04	0.299	-.0259353	.0842218
pindexextact	.0607977	.0253752	2.40	0.017	.0109814	.110614
finwelloff	-.0586299	.0252731	-2.32	0.021	-.1082458	-.0090139
sibdum	-.0226789	.0440458	-0.51	0.607	-.1091494	.0637915
age	.0486769	.0112727	4.32	0.000	.0265464	.0708073
agegap	.0057357	.0029499	1.94	0.052	-.0000556	.011527
pedu	-.0487094	.0405136	-1.20	0.230	-.1282455	.0308267
_cons	.2417437	.2446539	0.99	0.323	-.2385589	.7220463

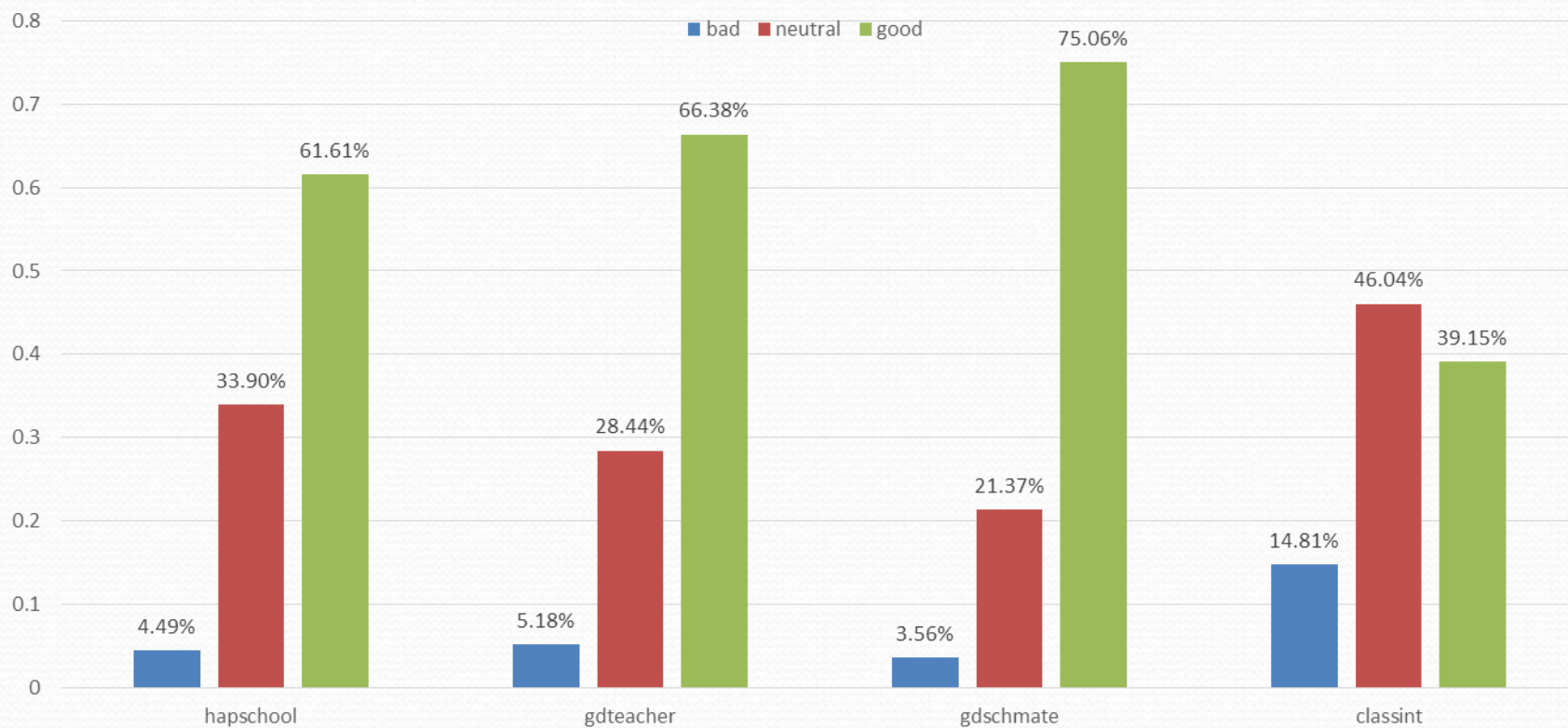
學童最享受有要好朋友

• . reg hap gdteacher gdschmate classint

Source	SS	df	MS	Number of obs = 1139		
Model	1073.35421	3	357.784737	F(3, 1135) =	83.02	
Residual	4891.35869	1135	4.30956713	Prob > F =	0.0000	
-----				R-squared =	0.1800	
Total	5964.71291	1138	5.24139974	Adj R-squared =	0.1778	
-----				Root MSE =	2.0759	
hap	Coef.	Std. Err.	t	P> t	[95% Conf. Interval]	
gdteacher	.449037	.084564	5.31	0.000	.2831176	.6149564
gdschmate	.5083643	.0784871	6.48	0.000	.3543682	.6623604
classint	.4431599	.0810008	5.47	0.000	.2842318	.602088
_cons	1.482134	.3457948	4.29	0.000	.8036649	2.160603

近15%學童認為課程缺乏趣味

Overall Happiness at School, Quality of Teachers, Good Schoolmates, and Finding School Curriculum Interesting



校園生活似比家庭生活影響更大

```
• . reg hap hapfam hapschool
```

```
•
```

Source	SS	df	MS	Number of obs =	1073
Model	1465.42441	2	732.712207	F(2, 1070) =	194.05
Residual	4040.10774	1070	3.77580162	Prob > F =	0.0000
Total	5505.53215	1072	5.13575761	R-squared =	0.2662

```
•
```

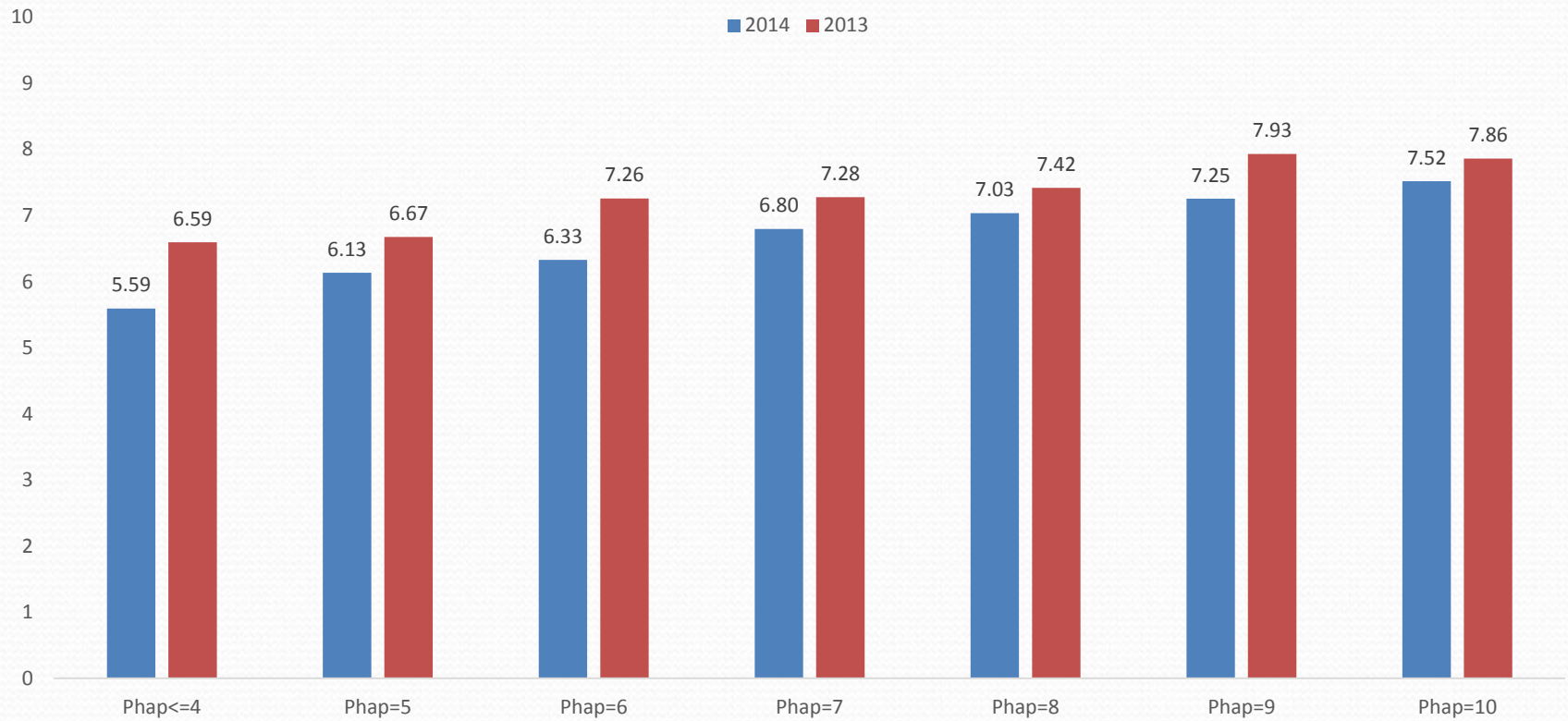
				Adj R-squared =	0.2648
				Root MSE =	1.9431

```
•
```

hap	Coef.	Std. Err.	t	P> t	[95% Conf. Interval]
hapfam	.7673352	.0654047	11.73	0.000	.6389991 .8956713
hapschool	.9294173	.0722617	12.86	0.000	.7876265 1.071208
_cons	.2253104	.3380177	0.67	0.505	-.4379423 .8885632

```
•
```

Comparison of Children's Happiness by Parents' Happiness in 2014 & 2013



父母快樂提升孩子快樂

```
. reg hap phap page age pfinwelloff male pedu
```

Source	SS	df	MS			
Model	215.050192	6	35.8416987	Number of obs =	841	
Residual	4099.81307	834	4.915843	F(6, 834) =	7.29	
Total	4314.86326	840	5.13674197	Prob > F =	0.0000	
				R-squared =	0.0498	
				Adj R-squared =	0.0430	
				Root MSE =	2.2172	

hap	Coef.	Std. Err.	t	P> t	[95% Conf. Interval]	
phap	.2100003	.0506217	4.15	0.000	.1106394	.3093611
page	.0263968	.0112525	2.35	0.019	.0043102	.0484834
age	-.1166124	.0417791	-2.79	0.005	-.1986169	-.0346079
pfinwelloff	.1063523	.1032815	1.03	0.303	-.0963699	.3090746
male	-.2948365	.1597174	-1.85	0.065	-.6083318	.0186588
pedu	.1291113	.1593463	0.81	0.418	-.1836556	.4418782
_cons	4.958398	.8197386	6.05	0.000	3.349405	6.567391

Parents' Happiness against Children's Happiness and Age Gap (Financial Well-being rated by Parents)

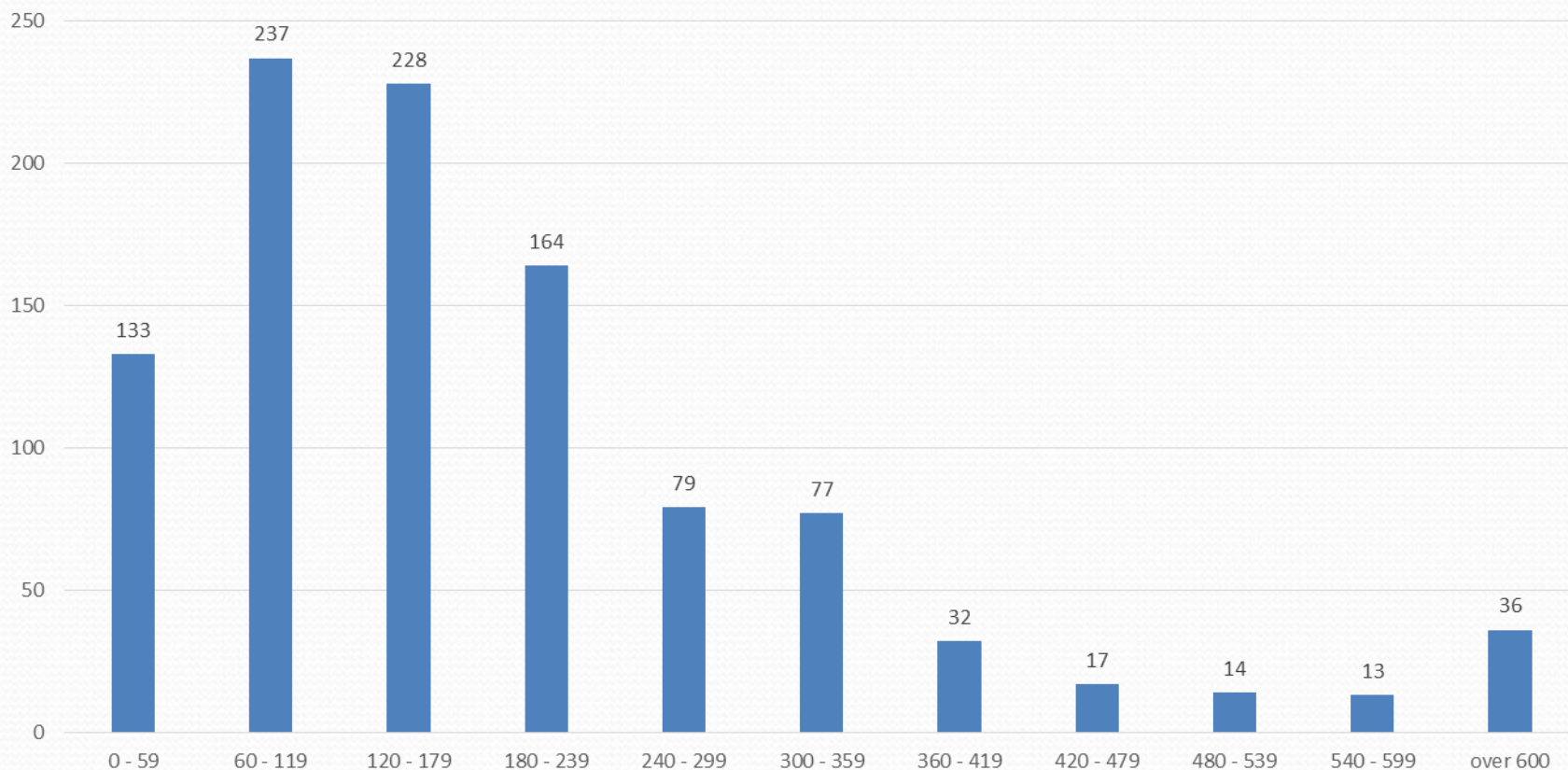
```
. reg phap hap page age pfinwelloff male pedu pmale
```

Source	SS	df	MS	Number of obs = 1322		
Model	554.441879	7	79.2059828	F(7, 1314)	=	34.80
Residual	2990.68142	1314	2.27601326	Prob > F	=	0.0000
Total	3545.1233	1321	2.68366639	R-squared	=	0.1564
				Adj R-squared	=	0.1519
				Root MSE	=	1.5086

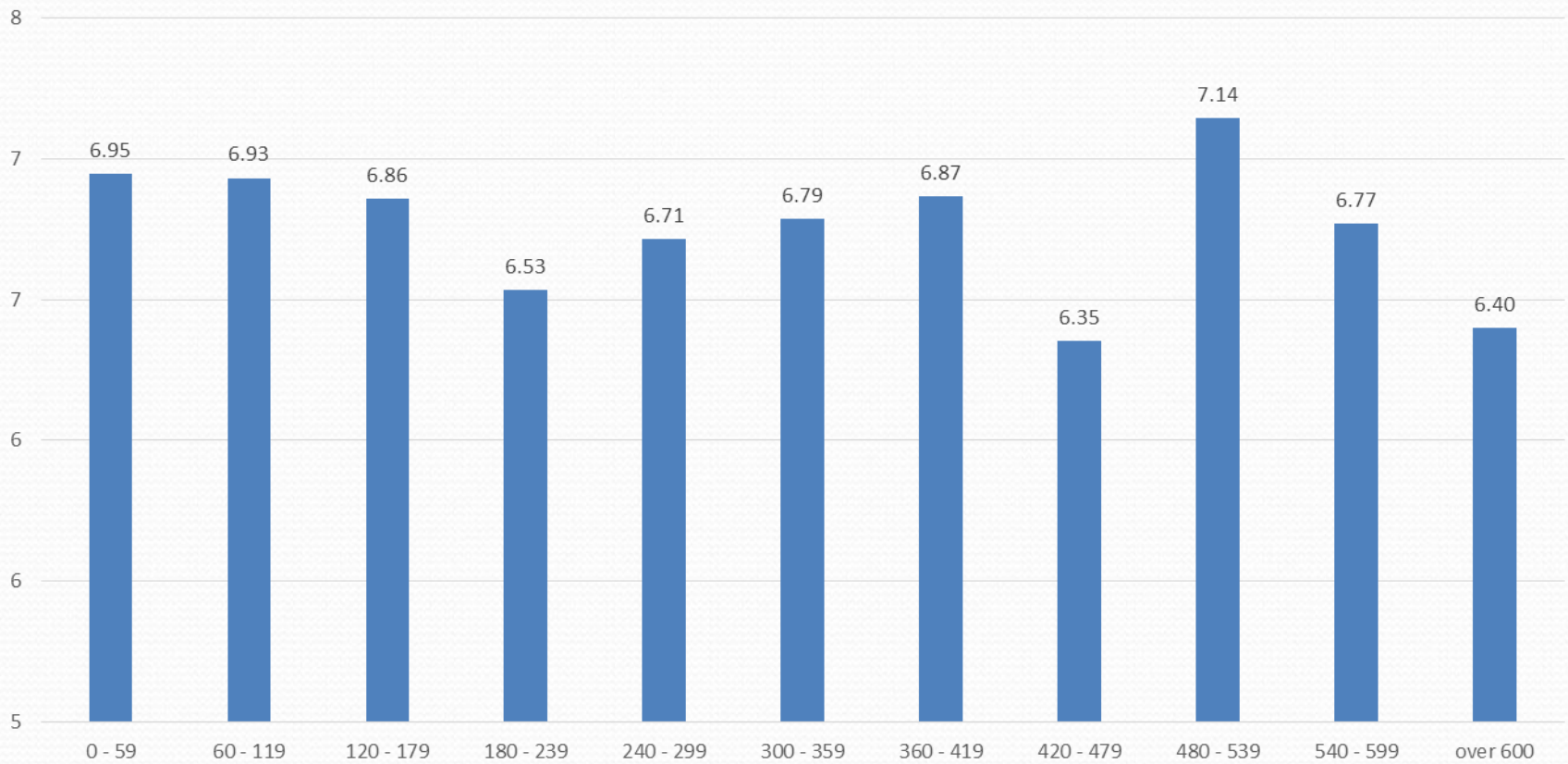
phap	Coef.	Std. Err.	t	P> t	[95% Conf. Interval]	
hap	.0885319	.0190933	4.64	0.000	.0510752	.1259886
page	-.0084019	.0074101	-1.13	0.257	-.0229389	.006135
age	-.0407821	.0232438	-1.75	0.080	-.0863812	.004817
pfinwelloff	.7366197	.0549972	13.39	0.000	.6287278	.8445115
male	-.0642203	.0870342	-0.74	0.461	-.2349614	.1065209
pedu	.0055134	.0843885	0.07	0.948	-.1600375	.1710644
pmale	-.0741445	.0934524	-0.79	0.428	-.2574768	.1091879
_cons	4.856416	.4586703	10.59	0.000	3.95661	5.756222

學童可支配時間(分鐘)

Frequency Distribution of Disposable Time on an Average Day with Class

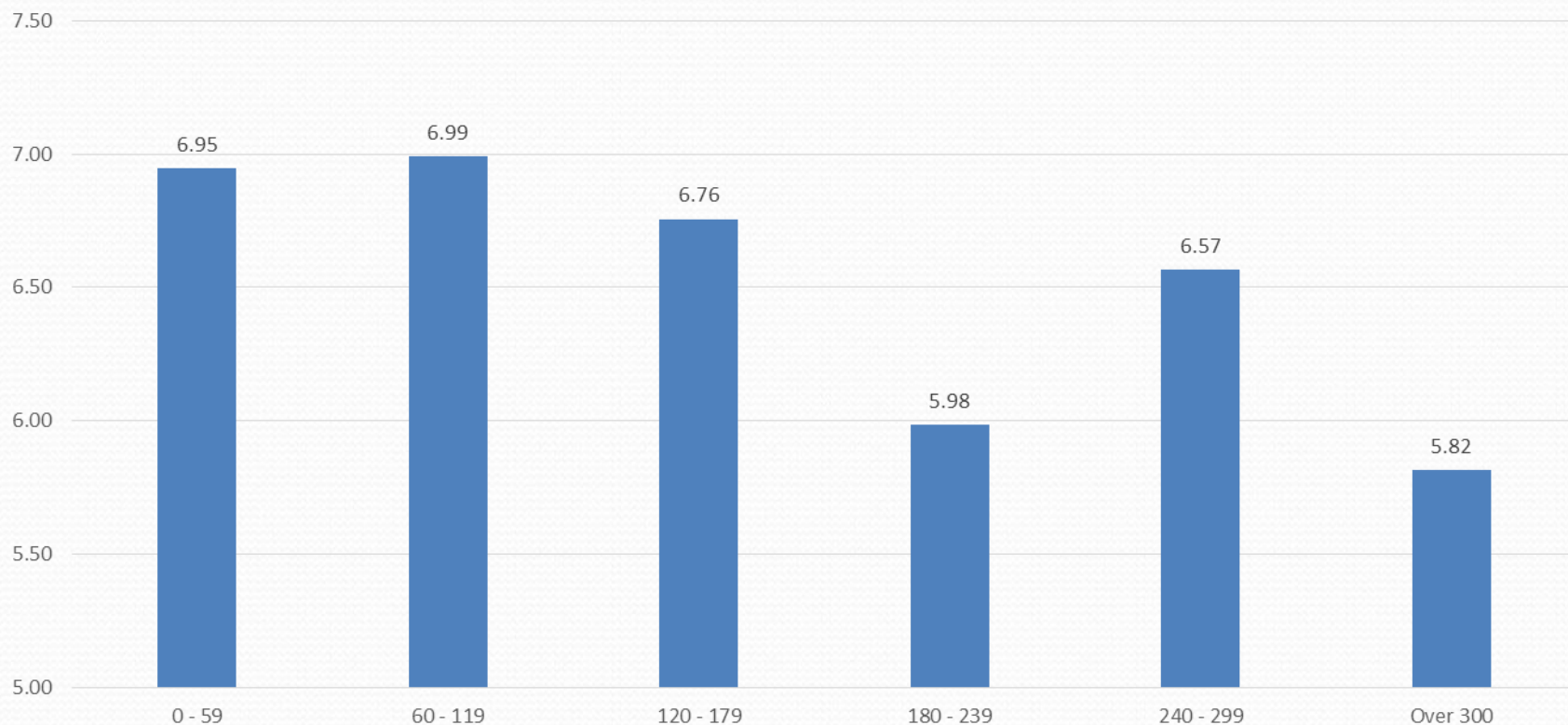


Average Children Happiness Score by Disposable Time

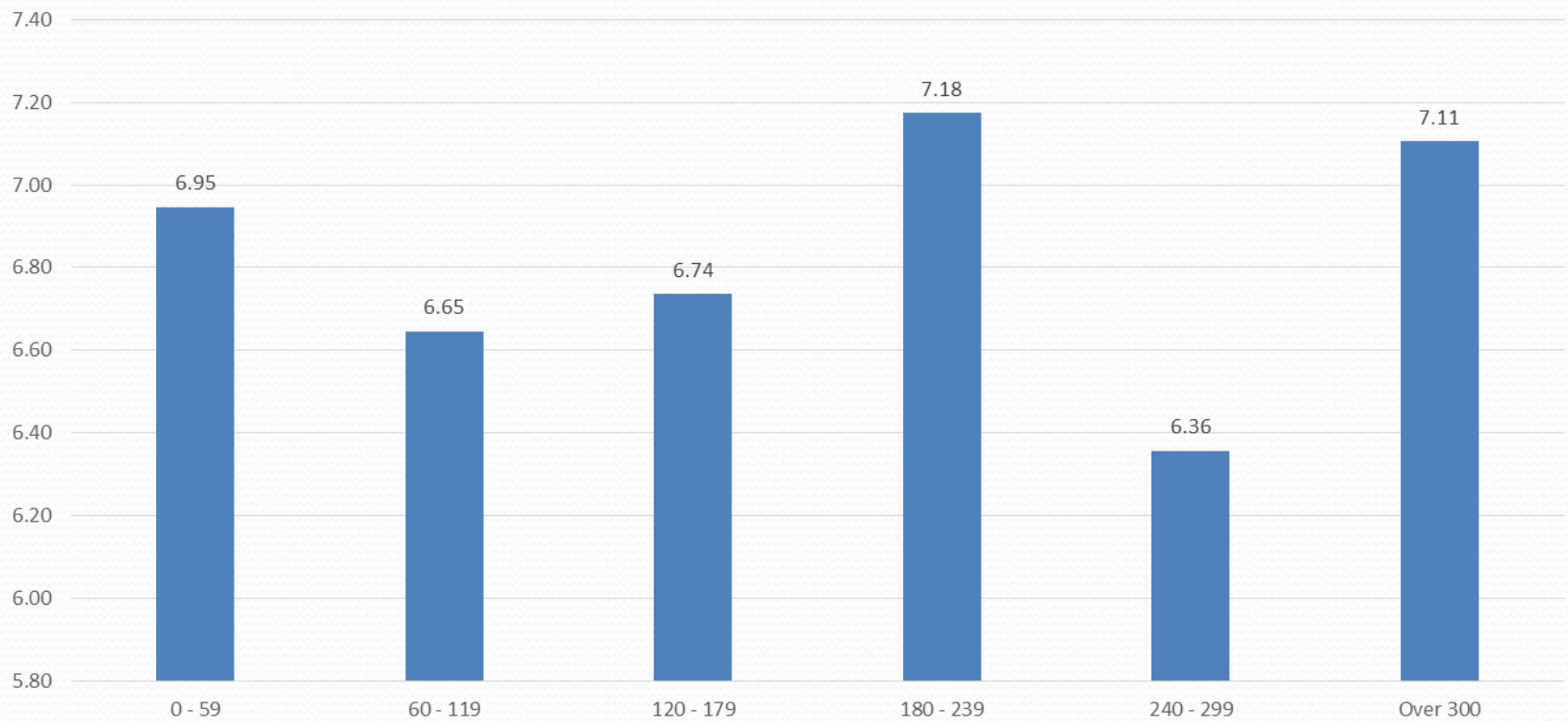


家課逾每天兩個半小時多不快樂

Average Children Happiness Score by Time Spent on Doing Homework on an Average Day with Class

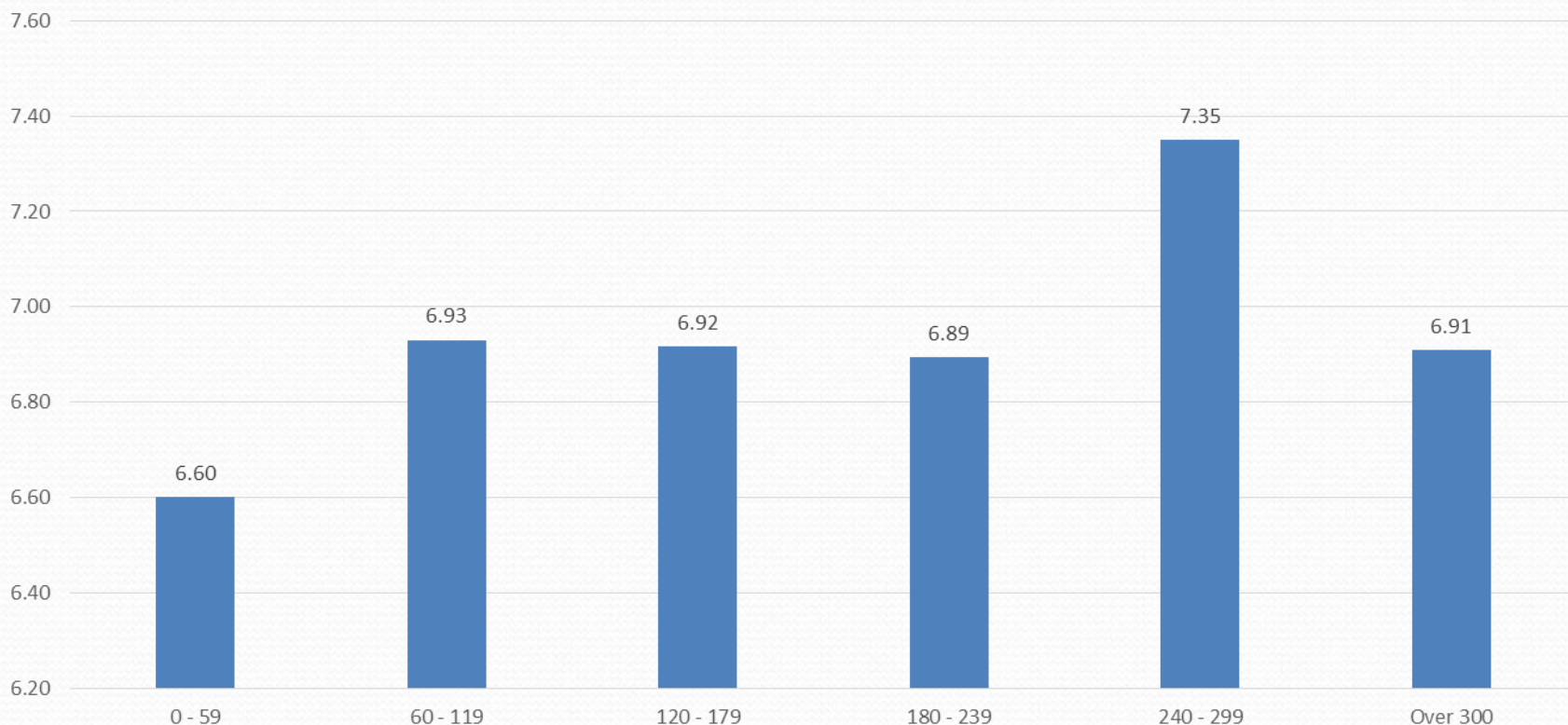


Average Children Happiness Score by Time Spent on Extra-curricular Activities
(Compulsory) in School



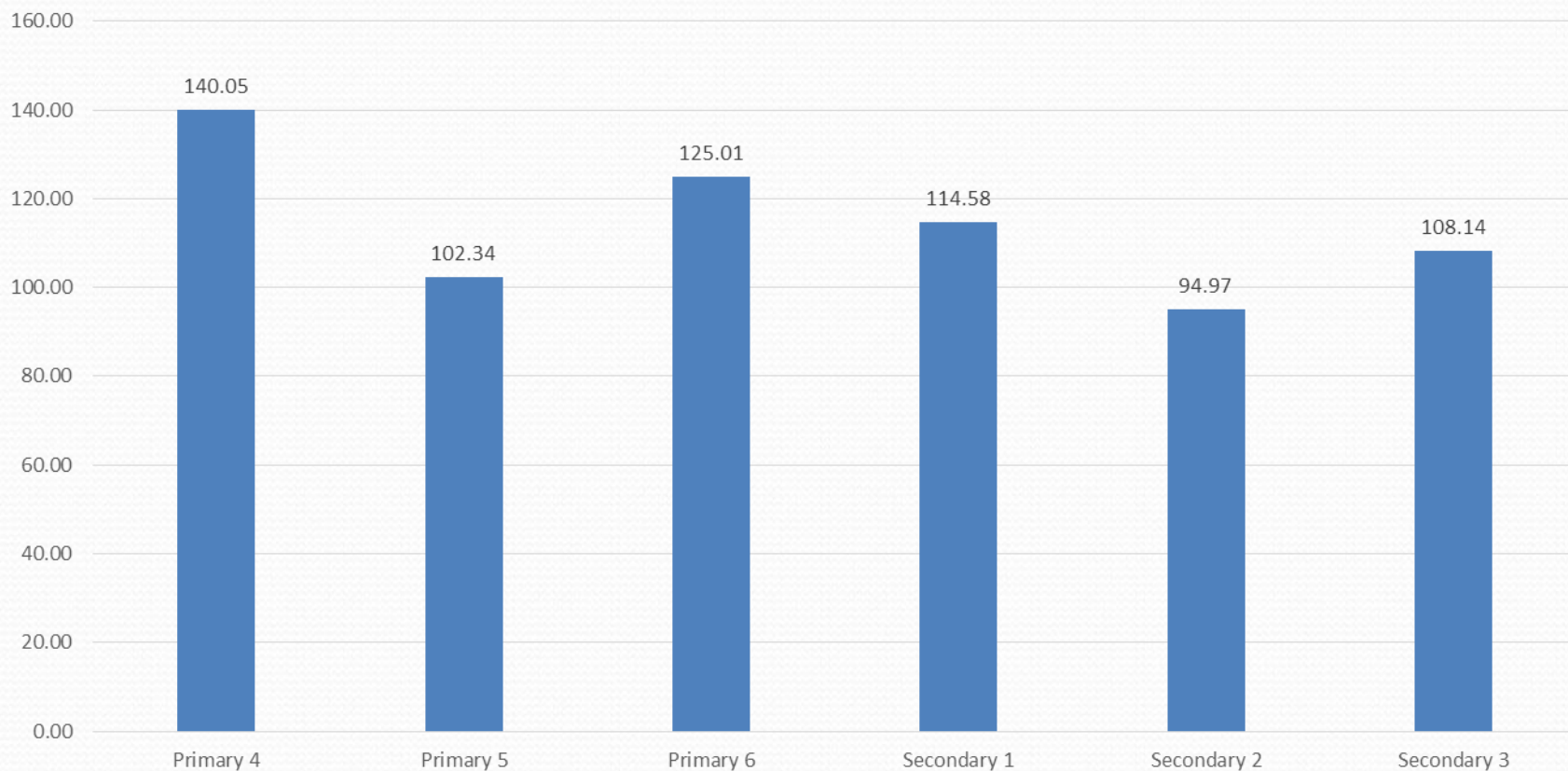
沒有自選課外活動多較不快樂

Average Children Happiness Score by Time Spent on Participating Extra-curricular Activities (Voluntary) in School



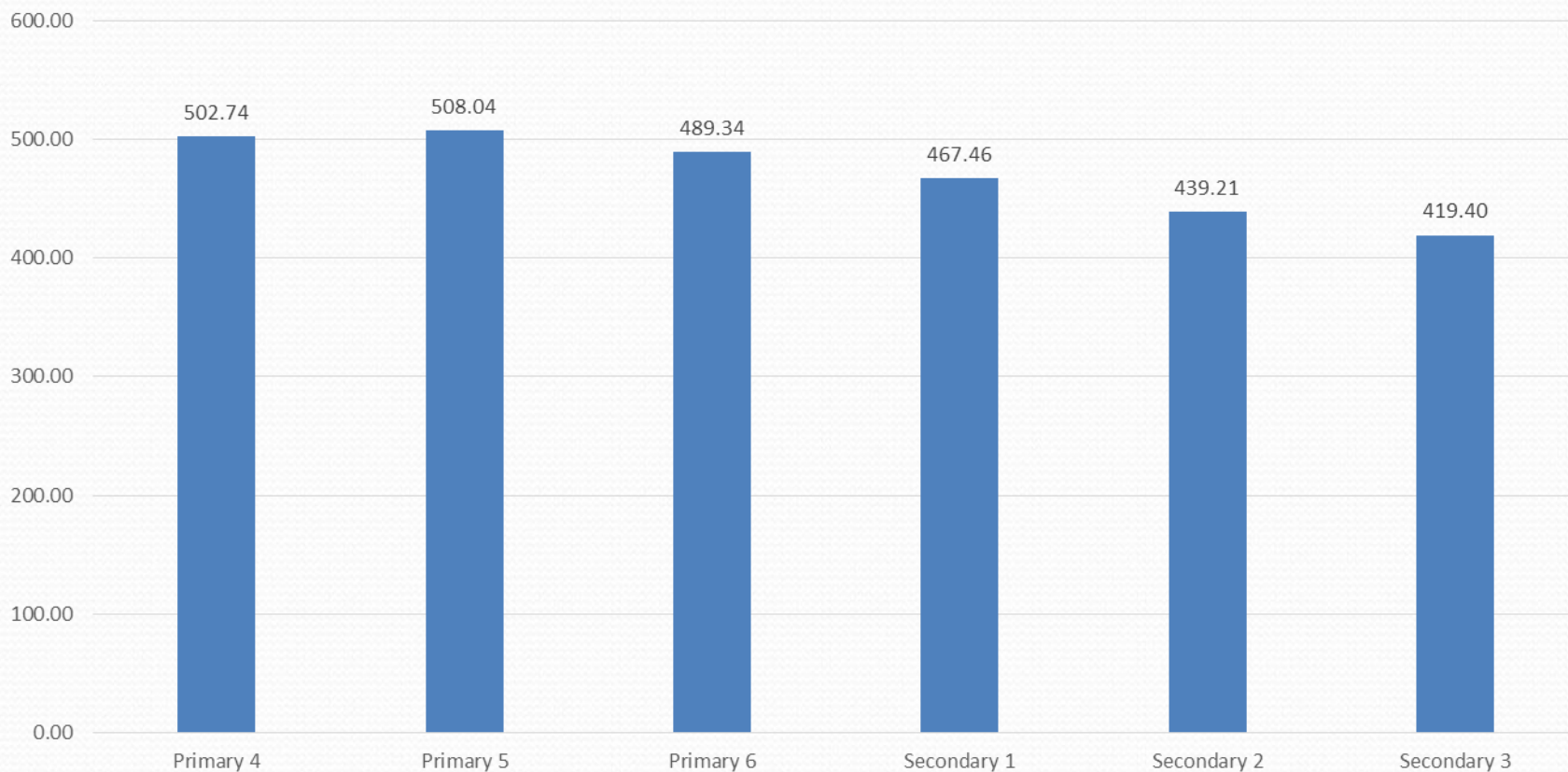
上課日家課多低於兩小時

Minutes of Time Spent on Homework on an Average Day with Class



愈高年級睡眠愈少

Minutes of Time Spent on Sleeping on an Average Day with Class

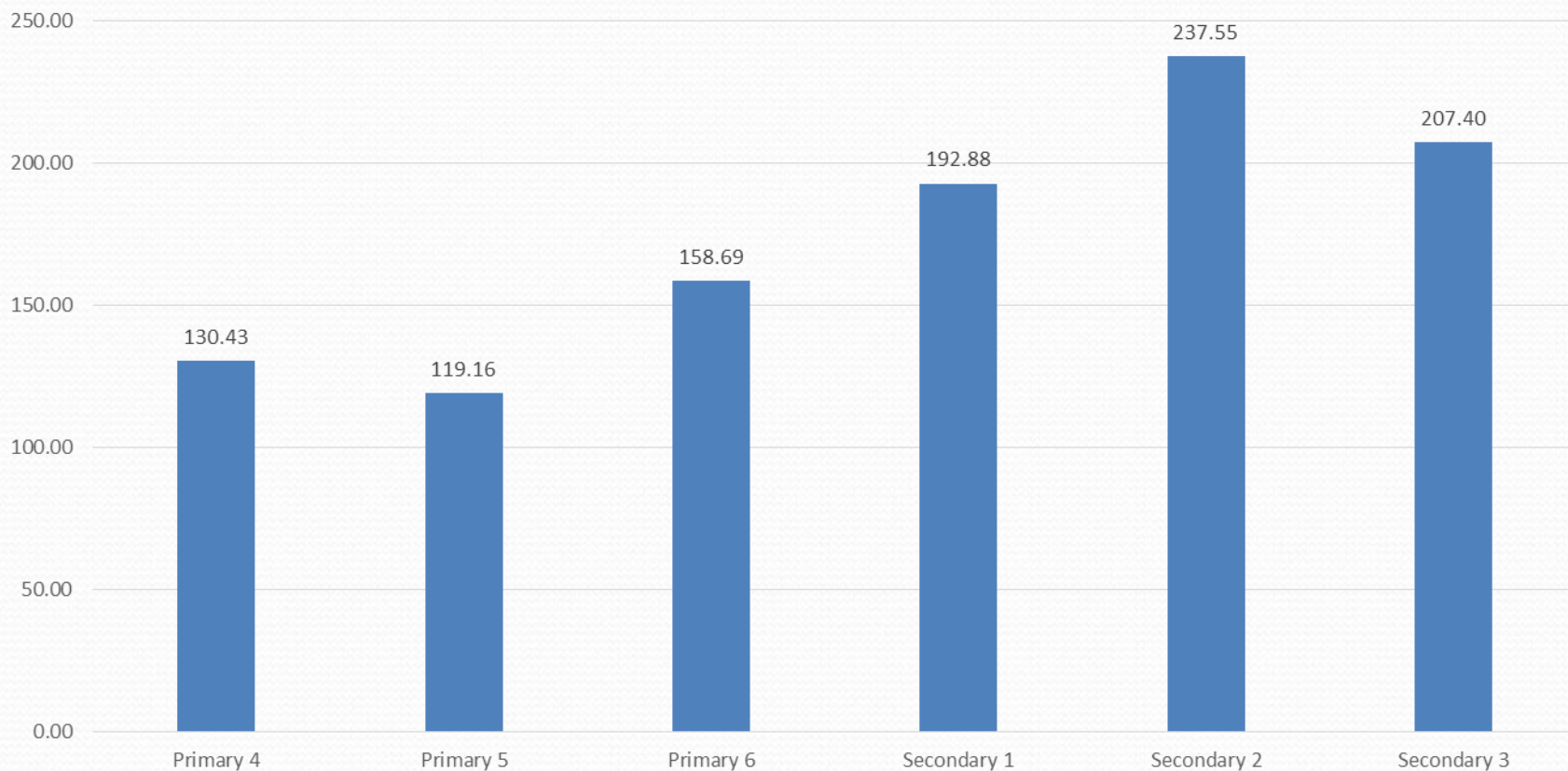


8小時睡眠的學童最快樂

Sleeping Time	Frequency	Happiness
<6 hours	76	5.71
6	166	6.07
7	309	6.67
8	344	7.14
9	186	7.06
10 or more	76	6.88

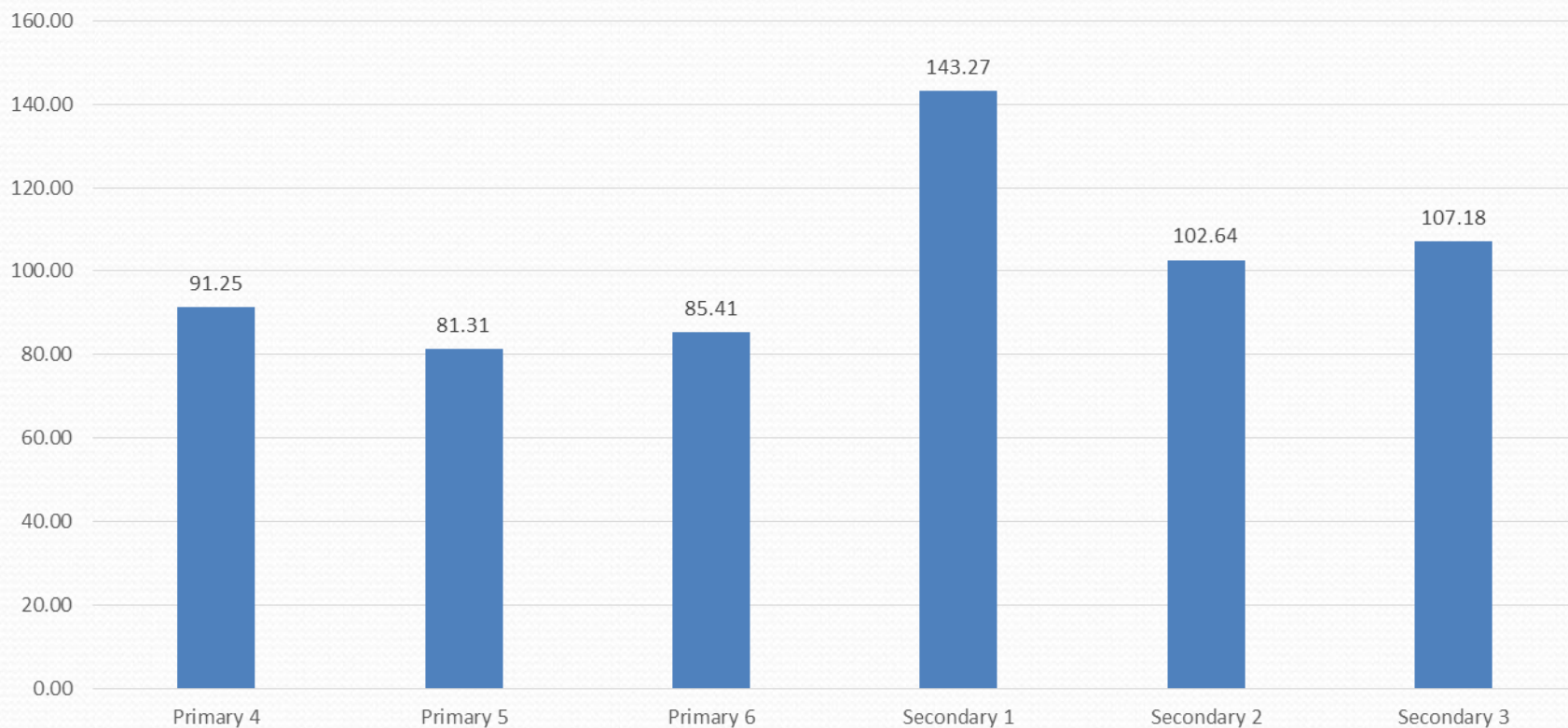
百無聊賴時間以中二為最多

Minutes of Time Spent on Doing Nothing ("Hea") on an Average Day with Class



強制課外活動中學較多

Minutes of Time Spent on Participating in Extra-curricular Activities (Compulsory) in an Average Day with Class



課餘活動每天逾一個半小時

Minutes of Time Spent on Participating in Extra-curricular Activities (Voluntary) in an Average Day with Class

